

Professional, compliant electrical label printing

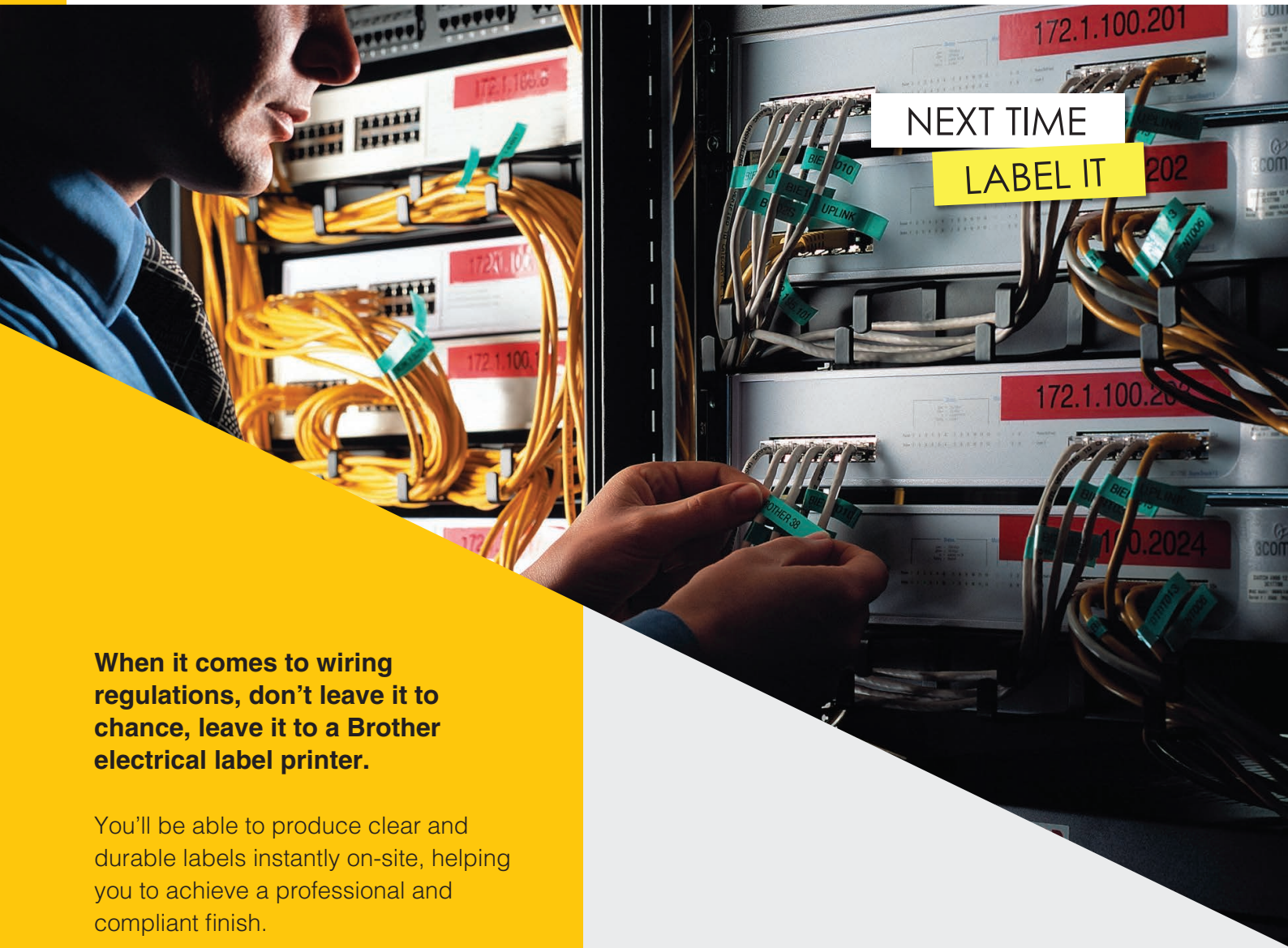
Produce clear, durable labels
instantly on-site

www.brother.co.za



MARK OF A SMART
PROFESSIONAL





When it comes to wiring regulations, don't leave it to chance, leave it to a Brother electrical label printer.

You'll be able to produce clear and durable labels instantly on-site, helping you to achieve a professional and compliant finish.

And when you choose a Brother electrical label printer, you choose the best. With super-fast printing, efficient cutting, wireless connectivity* plus industry symbols and templates at your fingertips, you're guaranteed to be more productive on-site.

Our market-leading machines are built to last and create labels to match. So your safety warnings, guidance notices and identification labels will stick around wherever you apply them.

*PT-E550W only.

Leave the mark of a smart professional

The best way to stay compliant

The need for labelling

Creating your own custom labels offers four key competitive advantages to electrical, datacom, telecom, AV and security installers:

① Professional Installation

Whether you are setting up new datacom systems, upgrading a LAN, rewiring and cabling an existing facility or working on new construction, we know that clearly marking wires and cables, equipment, outlet covers, plugs and sockets, switches and conduits is essential. With our range of industrial labelling machines you can add value to your service and impress your customers with a professional, quality installation by creating durable, easy-to-read labels that contain industry symbols and your company logo.

② Ease of Maintenance

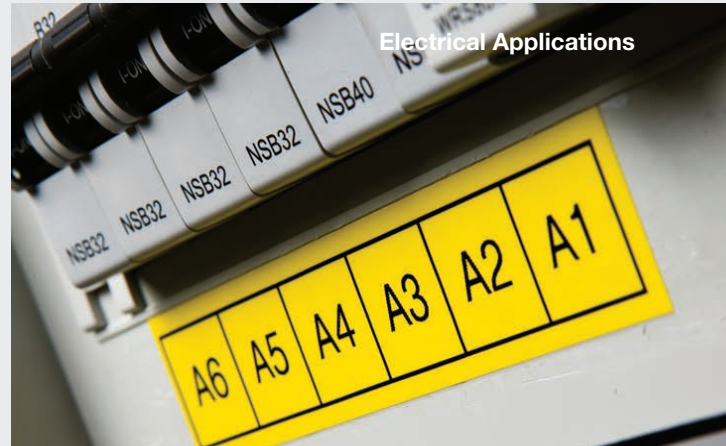
Reduce the time needed to diagnose faults by using Brother P-touch labels. Also, save costs due to increased efficiency for moves, additions and changing of cables – which helps accelerate work schedules and increase productivity.

③ Ease of Operation

Make life easier for your customers. Using Brother P-touch machines to clearly identify wires, cables, patch panels and faceplates ensures ease of operation and helps eliminate costly problems caused by illegible, handwritten, or incomplete labels.

④ Safety

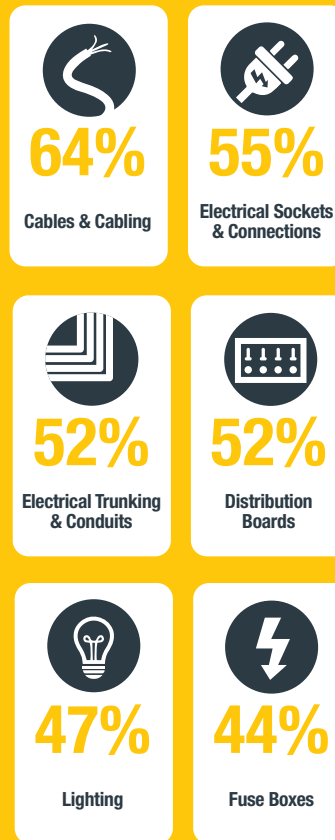
Create professional warning signs and information labels to instruct your customers and co-workers. Wider tapes and fluorescent colours are available for container management and safety, hazard and gas ID.



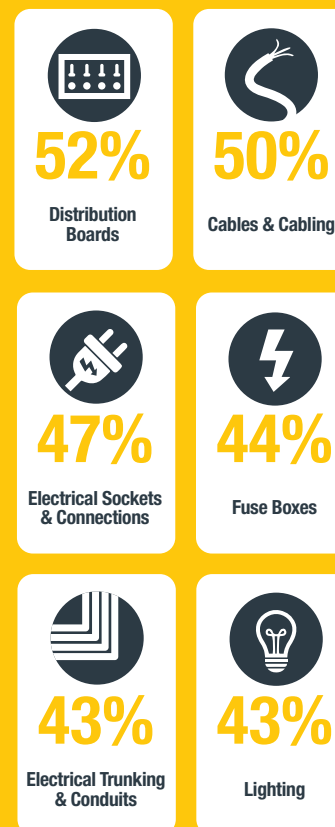


We talked to 400 Electricians and cable installers. UK 2017.

WHAT IS LABELLED DURING INSTALLATION

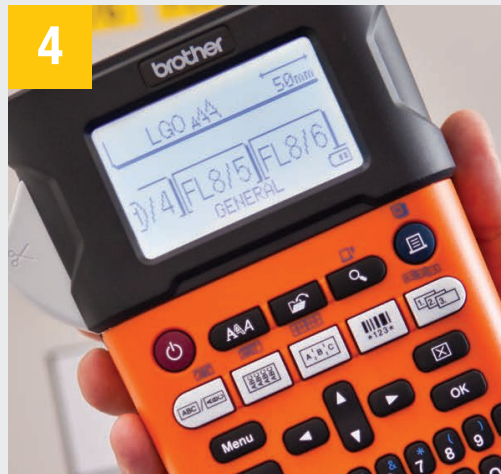
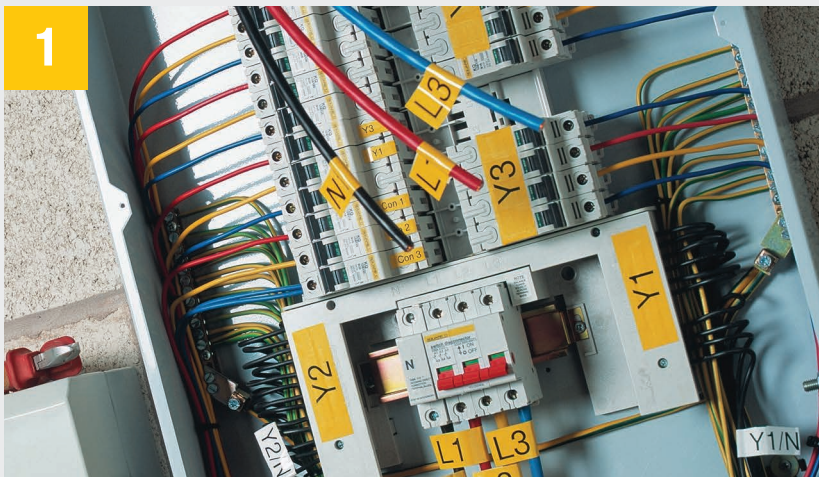


DURING MAINTENANCE AND COMPLIANCE



Features designed for electricians, datacom and other professional installers

* Excludes PT-E110VP



1. Advanced serialisation*

Built-in function to quickly and easily print labels containing incrementing numbers or letters.

2. Easy-to-read backlit LCD panel*

Easily view symbols and preview your label before printing.

3. Heat shrink tube*

Print directly onto non-smudge heat shrink tube up to 17.7mm.

4. Easy label creation

There's no guesswork with one touch short-cut keys so you get the right type of label for your application every time.

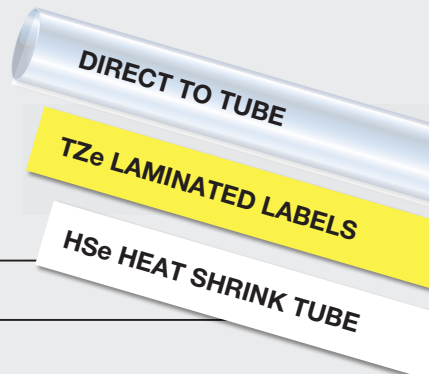
5. Symbols

Up to 384 Symbols (including typical industry symbols) are included as standard on all models.

PT-E800T

Industrial tube and label printer for electrical marking

The PT-E800T industrial tube and label printer enables electricians, distribution board builders, site engineers, server installation technicians and cable installers to mark their projects easily and effectively. The robust PT-E800T prints up to 36mm wide TZe laminated labels; up to 17,7mm heat shrink tube; as well as direct to tube up to 6mm high.



PT-E800T features:

- Connects to your PC via USB cable
- Create your own label layouts and add your own industrial symbols or your company logo using the supplied software
- Print more per label with additional printable height
- Print on HSe Heat Shrink Tube up to 17.7mm
- Switch between tube and label printing with twin engines
- Print on tubes up to 6.8mm
- Optional Li-ion rechargeable battery available
- Advanced auto serialise feature for up to 50 labels
- Barcode label printing
- 360 dpi print resolution
- Prints up to 7 lines on a label
- 384 symbols including electrical, datacom, Audio Visual and safety
- Built-in, industrial strength automatic full and half cutter helps reduce waste and keeps serialised numbers in order
- Prints fast – up to 60mm per second on labels
- Prints 6 label sizes – 6mm to 36mm

With fast print speeds of tube printing at 40mm per second and labels at 60mm per second, the PT-E800T allows print jobs to be completed quicker and even easier with the optional rechargeable battery and base for on-site use. It can be transported to where electrical work is in progress and controlled with a laptop.

Print via a USB connection with the Brother P-touch Editor software for label printing and the Brother Cable Label Tool software for tube printing.

PT-E800T includes:

- 36mm Black on White Tape (8m) (TZe-261)
- 100m Black Ink Ribbon for Tube Printing (TR-100BK)
- AC Adapter with 2 Pin Power Cable
- USB Cable
- User Manual
- Safety Guide
- CD-ROM

TZe Tapes	6, 9, 12, 18, 24, 36mm
Heat Shrink Tapes	5.8, 8.8, 11.7, 17.7mm



PT-E550WVP

Industrial labelling machine with PC and Wi-Fi connection



The P-Touch PT-E550WVP Industrial Labelling Machine takes compliant electrical labelling to a new level of productivity with seamless wireless connectivity to PC's, laptops, and mobile devices and is an indispensable tool for all electricians and datacomm installers. It comes complete with a lithium-ion rechargeable battery and AC adapter, all housed in a durable carry case.

PT-E550WVP features:

- Connects to your PC via USB cable
- Create your own label layouts and add your own industrial symbols or your company logo using the supplied software
- Download and store custom labels and databases from your PC to take your projects to the job site and avoid having to re-key lists of outlets, ports and cables
- QWERTY keyboard for quick text entry
- Prints non-smudge heat shrink labels
- Smart label application keys for general, faceplate, cable wrap/flag, patch panel and punch-down block identification
- Advanced auto serialise feature for up to 50 labels
- Barcode label printing
- Large backlit LCD lets you print in low-light conditions
- Prints up to 7 lines on a label
- 384 symbols including electrical, datacom, Audio Visual and safety
- Built-in, industrial strength automatic full and half cutter helps reduce waste and keeps serialised numbers in order
- Prints fast – up to 30mm per second
- Prints 5 label sizes – 6mm to 24mm

Built-in WiFi connection enables field workers to design, edit and print labels wirelessly from a smartphone for convenient on-the-job label printing. Establish a direct connection between your mobile device and the PT-E550WVP without a wireless access point.

To download free Brother apps visit the App Store or Google Play.

PT-E550WVP includes:

- 12mm Black on White Flexible ID Tape (8m) (TZe-FX231)
- Li-ion Rechargeable Battery
- AC Adapter
- Wrist Strap
- Carry Case
- USB Cable

TZe Tapes	6, 9, 12, 18, 24mm
Heat Shrink Tapes	5.8, 8.8, 11.7, 17.7mm



PT-E300VP

Industrial labelling machine with rechargeable battery



In electrical and datacom installations, clear, robust labelling is crucial – and the Brother PT-E300VP Label Printer with carry case has been designed to make the process easier than ever before. It's a durably engineered machine with a rechargeable battery and AC adapter that makes printing labels from 6mm to 18mm simple and convenient.

PT-E300VP features:

- QWERTY keyboard for quick text entry
- Prints non-smudge heat shrink labels
- Smart label application keys for general, faceplate, cable wrap/flag, patch panel and punch-down block identification
- Advanced auto serialise feature for up to 50 labels
- 9 Barcode protocols
- Large backlit LCD lets you print in low-light conditions
- Prints up to 5 lines on a label
- 384 symbols including electrical, datacom, Audio Visual and safety
- Built-in, industrial strength manual cutter with cut/pause function to help reduce waste. No scissors required!
- Prints fast – up to 20mm per second
- Prints 4 label sizes – 6mm to 18mm

The PT-E300VP labelling machine is ideal for warning notices and identification labels and prints durable labels up to 18mm.



PT-E300WVP includes:

- 9mm Black on White Strong Adhesive Tape (8m) (TZe-S221)
- Li-ion Rechargeable Battery
- AC Adapter
- Wrist Strap
- Carry Case

TZe Tapes	6, 9, 12, 18mm
Heat Shrink Tapes	5.8, 8.8, 11.7, 17.7mm



PT-E110VP

Industrial labelling machine with multiple cable modes



A purpose built labeller to add to your toolbox. Create long lasting labels in various colour combinations and widths with this industrial labeller. With dedicated functions to make common labelling tasks quick and easy, and with everything supplied in a hard carry case, the PT-E110VP is an invaluable tool for electricians and other professional trades.



PT-E110VP features:

- QWERTY keyboard for quick text entry

- 16 Character, 1 line graphic display

- Smart label application keys for general, faceplate, cable wrap/flag, patch panel and punch-down block identification

- 9.0mm Max print height

- 180dpi Print resolution

- Backlit LCD lets you print in low-light conditions

- Max 2 lines on 12mm label

- 200 Electrical and AV specific symbols

- Built-in, industrial strength manual cutter

- Prints fast – up to 20mm per second

- Prints 3 label sizes – 6mm, 9mm & 12mm

- 30 – 300mm Label length

Our most affordable industrial labelling solution. Label like a pro with the Brother PT-E110VP Handheld Label Printer, helping you get the job done quickly and correctly.

This easy-to-use machine is especially fast and efficient, printing up to 12mm wide labels that are designed for durability.



PT-E110VP includes:

- 9mm Black on White Flexible ID Tape (8m) (TZe-FX221)
- AC Adapter
- Carry Case

TZe Tapes	6, 9, 12mm
-----------	------------



Range Overview

P-touch E110VP, E300VP, E550WVP & E800T



Summary of features

	E110VP	E300VP	E550WVP	E800T
AC Adapter and carry case included	✓	✓	✓	✓
Can use standard alkaline batteries	✓	✓	✓	✓
Quick-change label cassette system	✓	✓	✓	✓
Store your favourite labels in memory	✓	✓	✓	✓
Quick number entry using dedicated keyboard	✓	✓	✓	✓
Basic range of industrial symbols	✓	✓	✓	✓
Label application keys for commonly used label types	✓	✓	✓	✓
Rotated text capability for wrapping around cables	✓	✓	✓	✓
Supplied with one label tape as standard	✓	✓	✓	✓
Prints directly onto Heat Shrink Tube		✓	✓	✓
Prints barcode labels		✓	✓	✓
Extended range of industrial symbols		✓	✓	✓
Protective rubber guard		✓	✓	✓
Advanced cutter ensures labels are cut to the required size		✓	✓	✓
Easy to read LCD with backlight		✓	✓	✓
Extended range of Label application keys		✓	✓	✓
Wrist strap - useful to carry machine whilst climbing ladders		✓	✓	✓
Li-ion rechargeable battery included/optional*		✓	✓	✓*
Store a company logo or other images in memory**			✓	✓
Create your own label templates to make label creation quicker**			✓	✓
Print labels up to 24mm in width			✓	✓
Print labels up to 36mm in width				✓

Tapes that are tested to the extreme



Brother P-touch laminated labels have been designed to last, wherever you use them. Our laminated tape technology means our labels are designed to stick around and ensure your text is protected. With excellent resistance to water, abrasion, chemicals, fading and temperature extremes, they'll never let you down. And their strong adhesion means when you label something on-site, it stays labelled.



Laminated



Temperature Resistant



Water Resistant



Fade Resistant



Abrasion Resistant



Chemical Resistant



Easy Peel



Strong Adhesion

Tapes for all types of jobs

Choosing the correct tape for the job is crucial. That is why Brother has a range of tapes specifically designed for different labelling applications. By using our unique lamination process and specially developed adhesives, you can be sure that your labels will withstand the harshest conditions, year after year.

TZe Laminated Tapes

Standard range of laminated tapes from 6mm to 36mm wide

TZe Strong Adhesive Tape

50% more adhesive strength in tapes from 9mm to 36mm

TZe Flexible ID Tapes

Designed for wrapping around small diameter surfaces (9, 12, 24mm)

TZe Security Tape

Features a special tamper-evident adhesive in an 18mm tape

HSe Heat Shrink Tubes

Non-adhesive tube to tightly fit your wires and cables up to 17.7mm.

brother

at your side

Brother International South Africa

96 Sovereign Drive, Route 21 Corporate Park, Irene
Tel: 0861 BROTHER Fax: +27 (0) 12 - 345 3886

www.brother.co.za <http://solutions.brother.com>



Working with you for a better environment
www.brotherearth.com