

Professional Colour Laser Printer

Robust, high-quality,
and responsibly designed

DCP-L8630CDW

The DCP-L8630CDW is a high-performance multifunction printer engineered for demanding office environments. It combines fast print and scan speeds with robust security features, seamless connectivity, and support for advanced workflow solutions.

Key features

- Print speed up to 31ppm
- 2-Sided print up to 20 sides per minute
- 1-Sided copy up to 31cpm
- WiFi 2.4GHz
- Gigabit ethernet
- 250 Sheet paper tray
- 50 Sheet Multi-Purpose input tray
- Auto paper low/empty detection
- 3,000 black, 1,800 colour page yield inbox toners



PRINT



SCAN



COPY

2.4GHz
WIRELESS

FPOT
Less than
9.9 Seconds

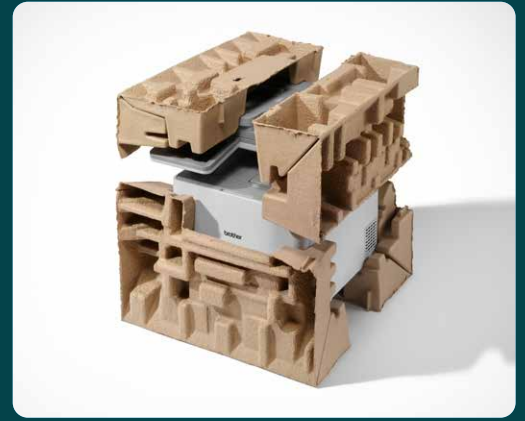
SCAN
Up to
28ipm

250
Sheet Optional
Paper Tray

Sustainability

Reducing our environmental impact

- Increase printer life and reduce downtime with easy to replace parts
- 100% EPS-free packaging for easy recycling
- Design and built to be remanufactured
- Made with up to 12% recycled plastic²⁷
- Up to 31% reduction in Typical Energy Consumption (TEC)²⁶
- Up to 12% reduction in CO2 emissions²⁸
- Blue Angel certified for meeting high environmental standards



Workflow

Built for business efficiency

- Monitor and control your Brother fleet with network-based management tools
- Boost efficiency with high-speed scanning for faster document processing

Productivity

Reliable performance, made to last

- Robust design, built for demanding businesses
- High-yield toners keep you printing without interruptions
- Keep printing for longer with scalable paper capacity
- Streamlined design, up to 25% smaller than previous model



Secure by design

Device Security

Your device protects your business by minimising attack surfaces through:

- Secure user access via LDAPS, Active Directory
- Controlled privileges using Secure Function Lock and Setting Lock
- System integrity ensured by intrusion detection, Secure Boot, and digitally signed firmware

Network Security

Your network is protected with flexible, industry-standard tools including:

- Intrusion protection through protocol control, interface restrictions, and IPv4 filtering
- Secure connections via IEEE 802.1X for enterprise wired and wireless networks
- Encrypted communication using TLS, SSH, IPSEC, HTTPS, and SNMPv3
- Centralised management with Device Master Settings, BRAdmin Pro 4, and Mass Deployment Tool
- Syslog reporting for seamless real-time SIEM integration

Document Security

Your documents are protected through:

- Encrypted transfer via IPPS/HTTPS for printing and TLS, HTTPS, SFTP for scanning
- Non-persistent memory, ensuring data is wiped after each job or reboot
- Secure print release, so documents only print when you're ready to collect them
- 3rd party integration via Brother Solutions Interface (BSI), to streamline workflows



Supplies

Toners



INBOX TONERS

3,000 BK, 1,800 CMY

TN667P

10,000 BK, 10,000 CMY

Accessories

Optional Lower Trays

LT-350CL

250 Sheet Lower Tray x 2 pcs
(Max 500 sheets)

Replaceable parts



Drum Unit
DR665CLP



Belt Unit
BU635CL

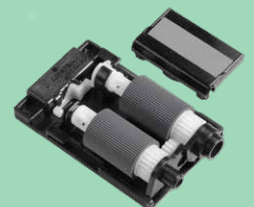


Waste Toner Box
WT229CL



Fuser Unit
FD-5000

Paper Feed Kit for MP Tray PF-M5000



General

Technology

Electrophotographic (Laser)

Laser Classification

Class 1 Laser Product

Memory

512MB internal

Processor

1200 MHz

Control Panel

8.8cm Colour
Touchscreen LCD

Local Interface¹⁸

Hi-Speed USB 2.0,
USB 2.0 Host (Front)

Wired Network interface

GigE (10Base-T/100Base-
TX/1000Base-T)

Configurable Shortcuts

Add, delete, change up to 48
personalised shortcuts for quick
and secure access to device
functions

Wireless Network interface

2.4GHz: IEEE 802.11b/g/n
(Infrastructure Mode),
Vertical Pairing

Wi-Fi Direct[®]

Print wirelessly without having
to use a wireless access point
(both automatic and manual
methods supported)

Print^{9,24}

Print Speed (A4)

Up to 31ppm
(pages per minute)

Print Speed 2-Sided (A4)

Up to 20 sides per minute
(10 sheets per minute)

Resolution

2,400dpi (2,400 x 600dpi),
600 x 600dpi
(Horizontal x Vertical,
dots per inch)

FPOT

(First Print out Time)

Less than 9.9 seconds from
ready mode and standard tray

Warm up Time

Less than 15.1 seconds from
sleep mode

Driverless Printing Compatibility

Windows Modern Print Platform Ready

Supports seamless, driverless
printing via IPP for instant setup
on Windows 10 (21H2+) and
Windows 11 devices

Mopria

Print common file types
from supported Android
mobile devices and Windows
computers

Apple AirPrint

Print common file types from any
AirPrint enabled application

ChromeOS™

Supports Work with
Chromebook printing

Our printers support driverless printing across Windows, macOS, iOS, and Android devices for instant, secure, and hassle-free setup

Printer Functions

Direct Print

Print directly from the front USB host port using a USB flash memory drive. Supported formats include; PDF 2.0, JPEG, TIFF (scanned using Brother model)

Print Complete Notice

A notification can be set to go to your computer when printing

Manual 2-Sided Print^{4,25}

Manual 2-sided printing recommended for media not supported by automatic 2-sided print

Carbon Copy⁴

Prints additional copies of the same document to paper taken from additional paper trays

Header Footer Print^{3,25}

Add the date, time, login user name, or custom text to the top or bottom of each printed page

Skip Tray¹⁹

Configures your paper tray selection to avoid specific trays/media for regular printing

N-up Printing³

Reduce up to 2, 4, 9, 16 or 25 A4 pages into just one A4 page, Mac (Airprint) up to 2, 4, 6, 9, or 16

Poster Printing^{4,25}

Enlarge 1 A4 page into a poster using 4, 9, 16 or 25 A4 pages

Watermark Printing^{3,25}

Watermark your documents with predefined or user-defined text

Secure Print³

Protect print jobs with a release code required at the device in order for them to be printed

Reverse Print^{4,25}

Rotate the content of a printed document by 180°

Paper Handling

Paper Input²

Standard (Tray 1)

250 Sheets

Multi Purpose Tray

50 Sheets, 10 Envelopes

Automatic Document Feeder (ADF)

80 Sheets

Paper Output²

150 sheets face down

1 sheet face up (straight path)

Media Sizes

Standard (Tray 1)

Letter, Legal, Executive, A4, A5, A5 (Long Edge), A6, Mexico Legal, India Legal, Folio, 16K (195 x 270mm)

Multi Purpose Tray

Width: 76.2mm - 216mm

Length: 116mm - 355.6mm

Envelopes; C5, Com-10,

DL, Monarch

Optional Trays

Letter, Legal, Executive, A4, A5, Mexico Legal, India Legal, Folio, 16K (195 x 270mm)

Automatic Document Feeder (ADF)

Width: 105 - 215.9mm

Length: 148 - 355.6mm

2-sided Print

A4

Media Weights

Standard (Tray 1)

60 - 105gsm

Multi Purpose Tray

60 - 163gsm

Optional Trays

60 - 105gsm

Automatic Document Feeder (ADF)

60 - 105gsm

Media Types

Standard (Tray 1)

Thin Paper, Plain Paper, Thick Paper, Recycled Paper

Multi Purpose Tray

Thin Paper, Plain Paper, Thick Paper, Recycled Paper, Bond Paper, Label, Envelope, Env. Thin, Env. Thick, Glossy Paper²⁰

Optional Trays

Thin Paper, Plain Paper, Recycled Paper

Auto 2-Sided Print

Thin Paper, Plain Paper, Thick Paper, Thicker Paper, Recycled Paper, Glossy paper

Automatic Document Feeder (ADF)

Thin Paper, Plain Paper, Recycled Paper

Paper Input Sensors

Onscreen and optional email alert notifications when input trays are empty or running low

Copy¹⁰

Copy Speed (A4)

Up to 31 cpm (1-sided)
(copies per minute)

FCOT

(First Copy Time Out)

12.5 seconds from ready mode
and standard tray

Resolution

Print up to 1,200 x 600dpi
(Horizontal x Vertical, dots
per inch)

Copy Functions

Multi-Copying

Ensures that your copies are
organised in the correct order,
making it easier to manage large
documents. Makes up to 999
copies of each page

Enlargement/Reduction Ratio

Reduce or Increase document
sizes from 25% to 400% in
1% increments

N in 1 Copying

Allows the user to compress 2 or
4 pages on to a single A4 sheet

Scan

Scan Speed Standard (A4)

Colour and Mono (1-sided)¹¹
Up to 28ipm
(images per minute)

Optical Scan Resolution

ADF Up to 600 x 600dpi
Flatbed Up to 1,200 x 1,200dpi
(Horizontal x Vertical,
dots per inch)

Interpolated Scan Resolution²²

Up to 19,200 x 19,200dpi
(Horizontal x Vertical, dots per
inch)

Scanner Type

Single CIS (Contact Image
Sensor)

Colour Depth

48 bit colour Processing (Input)
24 bit colour Processing (Output)

Grey Scale

256 levels (8 bit)

Scanner Functions

Windows⁵

TWAIN & WIA

Macintosh²³

AirPrint Scanning
macOS 10.14.x or greater

Linux⁵

SANE (32 & 64 bit editions)

Machine File Formats

Including PDF (PDF/A,
Secure PDF, Signed PDF,
High Compression PDF,
Multi-page PDF), JPEG, TIFF

Standard Machine Functions⁷

Scan to USB, E-mail, OCR,
Image and File

Network Scanning

Scan to network folder (SMB)⁴,
SFTP, FTPS, Email Server,
HTTPS, SharePoint (on premise)

Machine Scanning Features

Auto Deskew from ADF,
Background Colour Drop, Auto
Crop, Blank Page Removal

Scan Profile

Create up to 25 preset network
profiles for an easy way to store
multiple scan settings

Direct Scan

Scan directly to a USB flash
memory storage

ChromeOS™

Supports integrated Chrome OS
scanning functionality

Scan Preview

The contents of Scan to FTP,
Network, Email Server, HTTP,
Sharepoint (on premise) can
be checked before sending to
destination

Scan Margin

Setting the scan margin to
0mm removes the default 3mm
margin, allowing the scanned
image to capture the entire
document without any border

Document Separation

Create scanned files based
on blank sheet separation or a
specific number of single sided
images or sheets of paper, even
if more documents are set on
the ADF

Connectivity

Mobile Connect

Use a Brother app to Print from and scan to a mobile device running iOS or Android operating system

Brother Print Service Plugin⁵

Print from Android devices without a dedicated App

Microsoft Universal Print

Organisations can manage their brother print infrastructure through cloud services from Microsoft

Brother Apps¹²

Cloud Secure Print, Scan to; mobile, Searchable PDF, Microsoft PowerPoint, Word, Excel, Easy Scan to email

Web Connect^{12,16}

Without a PC you can download to print and upload from scan for Box, Microsoft Sharepoint Online, Dropbox, Evernote, OneDrive, Google Drive™ OneNote

Email Print^{12,16}

Enables driverless printing via email

Fleet Management Tools⁵

BRAdmin⁴

LAN/WAN management software

Clone Device Settings

Copy settings and configurations from one machine to another via a USB flash drive

Auto Pull Configuration

The device periodically checks an encrypted settings file on a network location. If the device has been changed the file is used to change back to the desired state configuration

Embedded Web Server

Using the IP address or node name of your device access via USB or network via a web browser to the web based print management software embedded onto the device using an randomly encrypted password

Mass Deployment Tool

Provides a configuration interface to help manage and deploy device settings.

Software⁵

Brother iPrint&Scan

Print from, scan to, preview copies and check the machine status from Windows or macOS PC using Brother software

Print Support App⁴

As an alternative to Windows Modern Print this method enhances compatibility and ease of use by enabling printing without traditional printer drivers, making it a versatile and efficient solution for modern printing needs accessible through the Microsoft Store

Visit: support.brother.com for the full list of supported OS and to download the latest software
All trademarks, brand and product names are property of their respective companies

Legacy Printer Drivers²⁴

PCL Driver⁴
Generic PCL XL driver

Universal Printer Driver⁴
BR-Script3 Driver that enables printing to any network or locally connected Brother laser printer that supports PostScript

Print Languages
PCL6, BR-Script3

Embedded Fonts (PCL)
73 scalable fonts, 12 bitmap fonts

Embedded Fonts (BR-script)
66 scalable fonts

Embedded Barcodes (PCL)
16 bar codes fonts - Code39, Interleaved 2 of 5, FIM (US-PostNet), Post Net (US-PostNet), EAN-8, EAN-13, UPC-A, UPC-E, Codabar, ISBN (EAN), ISBN (UPC-E), Code128 (set A,B, C), EAN128 (set A,B,C), Code93, GS1Databar, MSI

Linux
Printer Driver (Linux, CUPS, LPD/LPRng)

Network Security

Wired Network Security
SMTP-AUTH, SSL/TLS (IPP, HTTP, SMTP, FTP,LDAP), SNMP v3, 802.1x (EAP-MD5, EAP-FAST, PEAP, EAP-TLS, EAP-TTLS), OAuth (SMTP), Kerberos, Ipsec

Wireless Network Security
WEP 64/128 bit, WPA-PSK (TKIP/AES), WPA2-PSK (TKIP/AES), WPA3-SAE (AES), SMTP-AUTH, SSL/TLS (IPP, HTTP, SMTP, FTP,LDAP), SNMP v3, 802.1x (EAP-FAST, PEAP, EAP-TLS, EAP-TTLS), OAuth(SMTP), Kerberos, IPsec, Wi-Fi Protected Setup® (WPS)¹³

IPv4
ARP, RARP, BOOTP, DHCP, APIPA (Auto IP), WINS/NetBIOS name resolution, DNS Resolver, mDNS, LLNMR responder, LPR/LPD, Custom Raw Port/Port9100, SMTP Client, IPP/IPPS, FTP Client and Server, CIFS Client, TELNET Server, SNMPv1/v2c/v3, HTTP/HTTPS server, TFTP client and server, ICMP, Web Services (Print/Scan), SNTP Client, LDAP, LDAPS, Syslog

Display IP Address
The dynamic IP assigned to your device can be displayed on the home screen

IPv6
NDP, RA, DNS resolver, mDNS, LLNMR responder, LPR/LPD, Custom Raw Port/Port9100, IPP/IPPS, SMTP Client, FTP Client and Server, CIFS Client, TELNET Server, SNMPv1/v2c/v3, HTTP/HTTPS server, TFTP client and server, ICMPv6, Web Services (Print/Scan), SNTP Client, LDAP, LDAPS, Syslog

IP Filter
Restrict which network users can or cannot access the device over the network

Security Features

E-mail Notifications

Automatically have the device send e-mail alerts when it requires attention, such as when the toner is low or needs replacing

E-mail Reports

Receive usage reports on a regular basis via e-mail

Secure Boot

All Brother Print devices are secure by design. Devices automatically recognise security attacks and take preventative measures, including rebooting where necessary, in order to ensure the device remains secure

Digitally-signed Firmware

The firmware for Brother Print & Scan devices is digitally signed and secure

Active Directory/LDAP Authentication

Utilise existing infrastructure to restrict access to Brother devices using AD/LDAP. Staff can easily use their existing network login credentials to authenticate

Port-based Network Access Control

(IEEE 802.1x)
Brother devices are in full compliance with this standard, to allow connection to an 802.1x EAP (Extensible Authentication Protocol) protected network

Restrict network protocols

The network access control feature allows an administrator to restrict communication protocols (e.g. FTP, Telnet) as required

Setting Lock

Secures access to the devices control panel by locking it

Secure Function Lock 3.0

Use a 4 digit pin or a password to identify and authenticate an individual or groups of users over a network. Allows access control with username for up to 200 users

Store Print Log

Allows audit of a print log file saved to CIFS server. Record ID, type, name, user, date, time, page count for every print job

Firmware Updates

In addition to allowing automatic updates to the latest version the printer can be set to not receive older firmware versions to avoid downgrade by an unauthorised user

SysLog

Allows IT Admin to access a single application (SIEM tool) to get device status updates for audit purposes over Syslog

Address Book

Speed Dials

300 locations for E-mail addresses

Group Dial

A combination of up to 20 groups can be stored

LDAP

The ability to connect to an external LDAP enabled address book, like Microsoft Exchange

Developers

Brother Solutions Interface (BSI)

Create powerful cloud and on premise solutions directly integrating the advanced print, scan and security capabilities of Brother devices.

Supplies¹, Upgrades and Accessories

Inbox Toner

3,000 pages (BK)
1,800 pages (CMY)

Ultra High Yield Toner

TN667P
10,000 pages (BK)
10,000 pages (CMY)

Drum Unit

DR665CLP approx 50,000 pages
at 3 pages per job

Belt Unit

BU635CL approx. 100,000
pages at 3 pages per job

Waste Toner Box

WT229CL approx 50,000 pages
at 5 pages per job

Fuser Unit

FD-5000 approx 100,000 pages
at 5 pages per job

Paper Feed Kit for MP Tray

PF-M5000 approx 50,000 pages
at 5 pages per job

Carton Contents

Machine, Inbox Toners, Drum,
Belt, Waste Toner Box, Fuser,
PF Kit, Power Supply Cord,
Quick Set-Up Guide, Warranty
Card, (PC interface cable NOT
included)

Optional Paper Trays²

250 sheet tray (LT-350CL)
Maximum combinations of up to
2 x LT-350CL

Dimensions and weights (WxDxH)

Printer w/o Carton

404 x 473 x 460mm - 26kg
inc. TN/DR/WT/BU/FD/PF

Optional Paper Trays

250 sheet tray:
404 x 446 x 100mm - 3.25kg

RMPV

Recommended Monthly

Up to 5,000 pages monthly
print volume

Maximum Monthly⁶

Up to 60,000 pages monthly
print volume
Up to 5,000 pages monthly
scan volume

Environment

Power Requirement

AC 220-240V, 50/60Hz

Power Consumption¹⁴

Printing - 540W
(330W in quiet mode)
Copying - 540W
(330W in quiet mode)
Ready 60W
Sleep 8.4W
Networked Standby 7.8W
Deep Sleep 0.53W
Power Off 0.04W

Sound Pressure¹⁵

Printing: 49dbA
Quiet Print Mode: 44dbA
Default Ready: 31dbA

Sound Power¹⁵

Printing: 6.47BA
Quiet Print Mode: 5.88BA
Default Ready: 4.43BA
Deep Sleep: 3.38BA

Eco Mode

With seamless functionality
the eco control system of the
printer is designed to ensure
lower noise levels, consume
less energy when not in use and
optimise toner usage which all
help to reduce the total cost of
ownership

Operating Environment

Humidity 20 - 80%
Temp 10° - 32.5° centigrade
50° - 90.5° fahrenheit

Storage Environment

Humidity 35 - 85%
Temp 0° - 40° centigrade
32° - 104° fahrenheit

Computer Platforms

Windows

Windows 11
(Home|Pro|Education|Enterprise)
Windows 10
(Home|Pro|Education|Enterprise)
(32 or 64 bit editions)
Windows Server
2025, 2022, 2019, 2016

Linux

Supported Package
management System:²³
dpkg, rpm

Macintosh²¹

macOS 13 or greater

ChromeOS™

Compatible with Chromebooks,
including “Works with
Chromebook” certified printing
support and integrated Chrome
OS scanning functionality

Visit: support.brother.com for the full list of supported OS and to download the latest software

Warranty

Brother 3 Year Warranty

Your Brother printer comes with a FREE 3-year warranty — no registration required. To maintain optimal performance and warranty coverage, we recommend always using Brother Genuine Consumables.



1. Approx declared toner yield value in accordance with ISO/IEC 19798. 2. Calculated with 80gsm sheets of paper. 3. Windows & macOS. 4. Windows only. 5. Free download from the Brother Solutions Centre <http://solutions.brother.com> 6. Number of printed pages per month can be used to compare designed durability between Brother products. For maximum printer life, it is best to choose a printer with a duty cycle that exceeds your print requirements. 7. Requires Brother Software. 8. Based on ISO/IEC 24734. 9. Based on ISO/IEC 17629. 10. Based on ISO/IEC 24735. 11. Based on ISO/IEC 17991. 12. Requires an Internet connection. 13. Wi-Fi Direct supports WPA2-PSK (AES) only. 14. Measured according to IEC 62301 Edition 2.0. All values are approximate; power consumption varies depending on the usage environment or part wear. 15. Based on ISO 7779. 16. Requires additional activation. 17. May not be available in your region. 18. Third Party USB hubs not supported. 19. Requires installation of optional trays. 20. Set only a single sheet. 21. On macOS AirPrint only. 22. For WIA, 1200 x 1200 resolution. Brother Scanner Utility enables to enhance up to 19200 x 19200 dpi. 23. Red Hat Enterprise Linux 8.6 64bit, Red Hat Enterprise Linux 9.1 64bit, Fedora 39 64bit, Mageia 9 32bit, Mageia 9 64bit, openSUSE 15.5 64bit, SUSE Enterprise15-SP4 64bit, Debian 12.2.0 32bit, Debian 12.2.0 64bit, Ubuntu MATE 18.04 32bit, Ubuntu 22.04 64bit, Ubuntu 23.10 64bit, Linux Mint 21.2 64bit, Ubuntu 24.04 64bit. 24. Microsoft is transitioning towards driverless printing as the preferred standard. Legacy driver installations remain supported for customers with existing deployment requirements. 25. Advanced settings via legacy driver or the Print Support App only. 26. Compared to Brother's previous equivalent model. 27. Figure based on Brother's internal analysis at the time of publication. Figures may fluctuate depending on manufacturing methods and the availability of materials. 28. These results are based on Brother's internal calculations, compared to previous equivalent model. The CO₂ emissions scope covers C1 (Purchased goods and services), C11 (Use of sold products), and C12 (End-of-life treatment of sold products). Exact values may vary depending on country or region, manufacturing methods and the availability of materials.



brother
at your side

Brother International South Africa
96 Sovereign Drive, Route 21 Corporate Park, Irene
Tel 0861 brother Email info@brother.co.za
www.brother.co.za <https://support.brother.com/>



BROTHER CREATIVE CENTRE



Working with you for a sustainable future.



All specifications correct at time of publication and are subject to change without notice. Brother and its logo are trademarks of Brother Industries LTD., Japan. All registered trademarks referenced herein are the property of their respective companies.