

# Professional Colour Laser Printer

Robust, high-quality,  
and responsibly designed

**DCP-L8630CDW**

The DCP-L8630CDW is a high-performance multifunction printer engineered for demanding office environments. It combines fast print and scan speeds with robust security features, seamless connectivity, and support for advanced workflow solutions.

## Key features

- Print speed up to 31ppm
- 2-Sided print up to 20 sides per minute
- 1-Sided copy up to 31cpm
- WiFi 2.4GHz
- Gigabit ethernet
- 250 Sheet paper tray
- 50 Sheet Multi-Purpose input tray
- Auto paper low/empty detection
- 3,000 black, 1,800 colour page yield inbox toners



PRINT



SCAN



COPY

2.4GHz  
WIRELESS

**FPOT**  
Less than  
9.9 Seconds

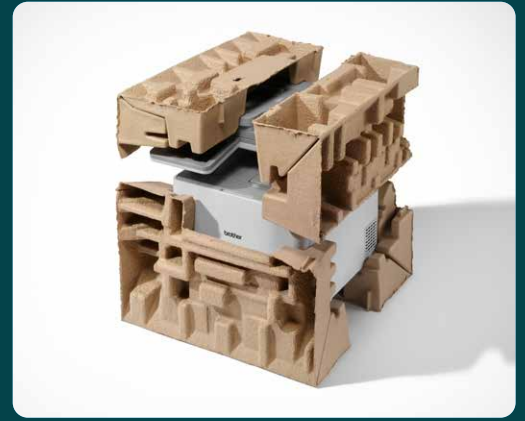
**SCAN**  
Up to  
28ipm

**250**  
Sheet Optional  
Paper Tray

## Sustainability

### Reducing our environmental impact

- Increase printer life and reduce downtime with easy to replace parts
- 100% EPS-free packaging for easy recycling
- Design and built to be remanufactured
- Made with up to 12% recycled plastic<sup>27</sup>
- Up to 31% reduction in Typical Energy Consumption (TEC)<sup>26</sup>
- Up to 12% reduction in CO2 emissions<sup>28</sup>
- Blue Angel certified for meeting high environmental standards



## Workflow

### Built for business efficiency

- Monitor and control your Brother fleet with network-based management tools
- Boost efficiency with high-speed scanning for faster document processing

## Productivity

### Reliable performance, made to last

- Robust design, built for demanding businesses
- High-yield toners keep you printing without interruptions
- Keep printing for longer with scalable paper capacity
- Streamlined design, up to 25% smaller than previous model



## Secure by design

### Device Security

Your device protects your business by minimising attack surfaces through:

- Secure user access via LDAPS, Active Directory
- Controlled privileges using Secure Function Lock and Setting Lock
- System integrity ensured by intrusion detection, Secure Boot, and digitally signed firmware

### Network Security

Your network is protected with flexible, industry-standard tools including:

- Intrusion protection through protocol control, interface restrictions, and IPv4 filtering
- Secure connections via IEEE 802.1X for enterprise wired and wireless networks
- Encrypted communication using TLS, SSH, IPSEC, HTTPS, and SNMPv3
- Centralised management with Device Master Settings, BRAdmin Pro 4, and Mass Deployment Tool
- Syslog reporting for seamless real-time SIEM integration

### Document Security

Your documents are protected through:

- Encrypted transfer via IPPS/HTTPS for printing and TLS, HTTPS, SFTP for scanning
- Non-persistent memory, ensuring data is wiped after each job or reboot
- Secure print release, so documents only print when you're ready to collect them
- 3rd party integration via Brother Solutions Interface (BSI), to streamline workflows



## Supplies

### Toners



#### INBOX TONERS

3,000 BK, 1,800 CMY

#### TN667P

10,000 BK, 10,000 CMY

## Accessories

### Optional Lower Trays

#### LT-350CL

250 Sheet Lower Tray x 2 pcs  
(Max 500 sheets)

## Replaceable parts



Drum Unit  
DR665CLP



Belt Unit  
BU635CL

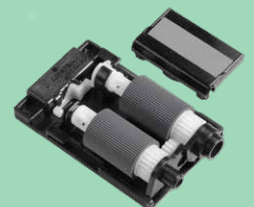


Waste Toner Box  
WT229CL



Fuser Unit  
FD-5000

#### Paper Feed Kit for MP Tray PF-M5000



## General

### Technology

Electrophotographic (Laser)

### Laser Classification

Class 1 Laser Product

### Memory

512MB internal

### Processor

1200 MHz

### Control Panel

8.8cm Colour  
Touchscreen LCD

### Local Interface<sup>18</sup>

Hi-Speed USB 2.0,  
USB 2.0 Host (Front)

### Wired Network interface

GigE (10Base-T/100Base-  
TX/1000Base-T)

### Configurable Shortcuts

Add, delete, change up to 48  
personalised shortcuts for quick  
and secure access to device  
functions

### Wireless Network interface

2.4GHz: IEEE 802.11b/g/n  
(Infrastructure Mode),  
Vertical Pairing

### Wi-Fi Direct<sup>®</sup>

Print wirelessly without having  
to use a wireless access point  
(both automatic and manual  
methods supported)

## Print<sup>9,24</sup>

### Print Speed (A4)

Up to 31ppm  
(pages per minute)

### Print Speed 2-Sided (A4)

Up to 20 sides per minute  
(10 sheets per minute)

### Resolution

2,400dpi (2,400 x 600dpi),  
600 x 600dpi  
(Horizontal x Vertical,  
dots per inch)

### FPOT

#### (First Print out Time)

Less than 9.9 seconds from  
ready mode and standard tray

### Warm up Time

Less than 15.1 seconds from  
sleep mode

## Driverless Printing Compatibility

### Windows Modern Print Platform Ready

Supports seamless, driverless  
printing via IPP for instant setup  
on Windows 10 (21H2+) and  
Windows 11 devices

### Mopria

Print common file types  
from supported Android  
mobile devices and Windows  
computers

### Apple AirPrint

Print common file types from any  
AirPrint enabled application

### ChromeOS™

Supports Work with  
Chromebook printing

Our printers support driverless printing across Windows, macOS, iOS, and Android devices for instant, secure, and hassle-free setup

## Printer Functions

### Direct Print

Print directly from the front USB host port using a USB flash memory drive. Supported formats include; PDF 2.0, JPEG, TIFF (scanned using Brother model)

### Print Complete Notice

A notification can be set to go to your computer when printing

### Manual 2-Sided Print<sup>4,25</sup>

Manual 2-sided printing recommended for media not supported by automatic 2-sided print

### Carbon Copy<sup>4</sup>

Prints additional copies of the same document to paper taken from additional paper trays

### Header Footer Print<sup>3,25</sup>

Add the date, time, login user name, or custom text to the top or bottom of each printed page

### Skip Tray<sup>19</sup>

Configures your paper tray selection to avoid specific trays/media for regular printing

### N-up Printing<sup>3</sup>

Reduce up to 2, 4, 9, 16 or 25 A4 pages into just one A4 page, Mac (Airprint) up to 2, 4, 6, 9, or 16

### Poster Printing<sup>4,25</sup>

Enlarge 1 A4 page into a poster using 4, 9, 16 or 25 A4 pages

### Watermark Printing<sup>3,25</sup>

Watermark your documents with predefined or user-defined text

### Secure Print<sup>3</sup>

Protect print jobs with a release code required at the device in order for them to be printed

### Reverse Print<sup>4,25</sup>

Rotate the content of a printed document by 180°

## Paper Handling

### Paper Input<sup>2</sup>

#### Standard (Tray 1)

250 Sheets

#### Multi Purpose Tray

50 Sheets, 10 Envelopes

#### Automatic Document Feeder (ADF)

80 Sheets

### Paper Output<sup>2</sup>

150 sheets face down

1 sheet face up (straight path)

### Media Sizes

#### Standard (Tray 1)

Letter, Legal, Executive, A4, A5, A5 (Long Edge), A6, Mexico Legal, India Legal, Folio, 16K (195 x 270mm)

#### Multi Purpose Tray

Width: 76.2mm - 216mm  
Length: 116mm - 355.6mm  
Envelopes; C5, Com-10, DL, Monarch

#### Optional Trays

Letter, Legal, Executive, A4, A5, Mexico Legal, India Legal, Folio, 16K (195 x 270mm)

#### Automatic Document Feeder (ADF)

Width: 105 - 215.9mm

Length: 148 - 355.6mm

### 2-sided Print

A4

### Media Weights

#### Standard (Tray 1)

60 - 105gsm

#### Multi Purpose Tray

60 - 163gsm

#### Optional Trays

60 - 105gsm

#### Automatic Document Feeder (ADF)

60 - 105gsm

### Media Types

#### Standard (Tray 1)

Thin Paper, Plain Paper, Thick Paper, Recycled Paper

#### Multi Purpose Tray

Thin Paper, Plain Paper, Thick Paper, Recycled Paper, Bond Paper, Label, Envelope, Env. Thin, Env. Thick, Glossy Paper<sup>20</sup>

#### Optional Trays

Thin Paper, Plain Paper, Recycled Paper

#### Auto 2-Sided Print

Thin Paper, Plain Paper, Thick Paper, Thicker Paper, Recycled Paper, Glossy paper

#### Automatic Document Feeder (ADF)

Thin Paper, Plain Paper, Recycled Paper

### Paper Input Sensors

Onscreen and optional email alert notifications when input trays are empty or running low

## Copy<sup>10</sup>

### Copy Speed (A4)

Up to 31 cpm (1-sided)  
(copies per minute)

### FCOT

#### (First Copy Time Out)

12.5 seconds from ready mode  
and standard tray

### Resolution

Print up to 1,200 x 600dpi  
(Horizontal x Vertical, dots  
per inch)

## Copy Functions

### Multi-Copying

Ensures that your copies are  
organised in the correct order,  
making it easier to manage large  
documents. Makes up to 999  
copies of each page

### Enlargement/Reduction Ratio

Reduce or Increase document  
sizes from 25% to 400% in  
1% increments

### N in 1 Copying

Allows the user to compress 2 or  
4 pages on to a single A4 sheet

## Scan

### Scan Speed Standard (A4)

Colour and Mono (1-sided)<sup>11</sup>  
Up to 28ipm  
(images per minute)

### Optical Scan Resolution

ADF Up to 600 x 600dpi  
Flatbed Up to 1,200 x 1,200dpi  
(Horizontal x Vertical,  
dots per inch)

### Interpolated Scan Resolution<sup>22</sup>

Up to 19,200 x 19,200dpi  
(Horizontal x Vertical, dots per  
inch)

### Scanner Type

Single CIS (Contact Image  
Sensor)

### Colour Depth

48 bit colour Processing (Input)  
24 bit colour Processing (Output)

### Grey Scale

256 levels (8 bit)

## Scanner Functions

### Windows<sup>5</sup>

TWAIN & WIA

### Macintosh<sup>23</sup>

AirPrint Scanning  
macOS 10.14.x or greater

### Linux<sup>5</sup>

SANE (32 & 64 bit editions)

### Machine File Formats

Including PDF (PDF/A,  
Secure PDF, Signed PDF,  
High Compression PDF,  
Multi-page PDF), JPEG, TIFF

### Standard Machine Functions<sup>7</sup>

Scan to USB, E-mail, OCR,  
Image and File

### Network Scanning

Scan to network folder (SMB)<sup>4</sup>,  
SFTP, FTPS, Email Server,  
HTTPS, SharePoint (on premise)

### Machine Scanning Features

Auto Deskew from ADF,  
Background Colour Drop, Auto  
Crop, Blank Page Removal

### Scan Profile

Create up to 25 preset network  
profiles for an easy way to store  
multiple scan settings

### Direct Scan

Scan directly to a USB flash  
memory storage

### ChromeOS™

Supports integrated Chrome OS  
scanning functionality

### Scan Preview

The contents of Scan to FTP,  
Network, Email Server, HTTP,  
Sharepoint (on premise) can  
be checked before sending to  
destination

### Scan Margin

Setting the scan margin to  
0mm removes the default 3mm  
margin, allowing the scanned  
image to capture the entire  
document without any border

### Document Separation

Create scanned files based  
on blank sheet separation or a  
specific number of single sided  
images or sheets of paper, even  
if more documents are set on  
the ADF

## Connectivity

### Mobile Connect

Use a Brother app to Print from and scan to a mobile device running iOS or Android operating system

### Brother Print Service Plugin<sup>5</sup>

Print from Android devices without a dedicated App

### Microsoft Universal Print

Organisations can manage their brother print infrastructure through cloud services from Microsoft

### Brother Apps<sup>12</sup>

Cloud Secure Print, Scan to; mobile, Searchable PDF, Microsoft PowerPoint, Word, Excel, Easy Scan to email

### Web Connect<sup>12,16</sup>

Without a PC you can download to print and upload from scan for Box, Microsoft Sharepoint Online, Dropbox, Evernote, OneDrive, Google Drive™ OneNote

### Email Print<sup>12,16</sup>

Enables driverless printing via email

## Fleet Management Tools<sup>5</sup>

### BRAdmin<sup>4</sup>

LAN/WAN management software

### Clone Device Settings

Copy settings and configurations from one machine to another via a USB flash drive

### Auto Pull Configuration

The device periodically checks an encrypted settings file on a network location. If the device has been changed the file is used to change back to the desired state configuration

### Embedded Web Server

Using the IP address or node name of your device access via USB or network via a web browser to the web based print management software embedded onto the device using an randomly encrypted password

### Mass Deployment Tool

Provides a configuration interface to help manage and deploy device settings.

## Software<sup>5</sup>

### Brother iPrint&Scan

Print from, scan to, preview copies and check the machine status from Windows or macOS PC using Brother software

### Print Support App<sup>4</sup>

As an alternative to Windows Modern Print this method enhances compatibility and ease of use by enabling printing without traditional printer drivers, making it a versatile and efficient solution for modern printing needs accessible through the Microsoft Store

Visit: [support.brother.com](http://support.brother.com) for the full list of supported OS and to download the latest software  
All trademarks, brand and product names are property of their respective companies

## Legacy Printer Drivers<sup>24</sup>

### PCL Driver<sup>4</sup>

Generic PCL XL driver

### Universal Printer Driver<sup>4</sup>

BR-Script3 Driver that enables printing to any network or locally connected Brother laser printer that supports PostScript

### Print Languages

PCL6, BR-Script3, PDF Version 2.0

### Embedded Fonts (PCL)

73 scalable fonts, 12 bitmap fonts

### Embedded Fonts (BR-script)

66 scalable fonts

### Embedded Barcodes (PCL)

16 bar codes fonts - Code39, Interleaved 2 of 5, FIM (US-PostNet), Post Net (US-PostNet), EAN-8, EAN-13, UPC-A, UPC-E, Codabar, ISBN (EAN), ISBN (UPC-E), Code128 (set A,B, C), EAN128 (set A,B,C), Code93, GS1Databar, MSI

### Linux

Printer Driver (Linux, CUPS, LPD/LPRng)

## Network Security

### Wired Network Security

SMTP-AUTH, SSL/TLS (IPP, HTTP, SMTP, FTP,LDAP), SNMP v3, 802.1x (EAP-MD5, EAP-FAST, PEAP, EAP-TLS, EAP-TTLS), OAuth (SMTP), Kerberos, Ipsec

### Wireless Network Security

WEP 64/128 bit, WPA-PSK (TKIP/AES), WPA2-PSK (TKIP/AES), WPA3-SAE (AES), SMTP-AUTH, SSL/TLS (IPP, HTTP, SMTP, FTP,LDAP), SNMP v3, 802.1x (EAP-FAST, PEAP, EAP-TLS, EAP-TTLS), OAuth(SMTP), Kerberos, IPsec, Wi-Fi Protected Setup® (WPS)<sup>13</sup>

### IPv4

ARP, RARP, BOOTP, DHCP, APIPA (Auto IP), WINS/NetBIOS name resolution, DNS Resolver, mDNS, LLNMR responder, LPR/LPD, Custom Raw Port/Port9100, SMTP Client, IPP/IPPS, FTP Client and Server, CIFS Client, TELNET Server, SNMPv1/v2c/v3, HTTP/HTTPS server, TFTP client and server, ICMP, Web Services (Print/Scan), SNTP Client, LDAP, LDAPS, Syslog

### Display IP Address

The dynamic IP assigned to your device can be displayed on the home screen

### IPv6

NDP, RA, DNS resolver, mDNS, LLNMR responder, LPR/LPD, Custom Raw Port/Port9100, IPP/IPPS, SMTP Client, FTP Client and Server, CIFS Client, TELNET Server, SNMPv1/v2c/v3, HTTP/HTTPS server, TFTP client and server, ICMPv6, Web Services (Print/Scan), SNTP Client, LDAP, LDAPS, Syslog

### IP Filter

Restrict which network users can or cannot access the device over the network

## Security Features

### E-mail Notifications

Automatically have the device send e-mail alerts when it requires attention, such as when the toner is low or needs replacing

### E-mail Reports

Receive usage reports on a regular basis via e-mail

### Secure Boot

All Brother Print devices are secure by design. Devices automatically recognise security attacks and take preventative measures, including rebooting where necessary, in order to ensure the device remains secure

### Digitally-signed Firmware

The firmware for Brother Print & Scan devices is digitally signed and secure

### Active Directory/LDAP Authentication

Utilise existing infrastructure to restrict access to Brother devices using AD/LDAP. Staff can easily use their existing network login credentials to authenticate

### Port-based Network Access Control

(IEEE 802.1x)  
Brother devices are in full compliance with this standard, to allow connection to an 802.1x EAP (Extensible Authentication Protocol) protected network

### Restrict network protocols

The network access control feature allows an administrator to restrict communication protocols (e.g. FTP, Telnet) as required

### Setting Lock

Secures access to the devices control panel by locking it

### Secure Function Lock 3.0

Use a 4 digit pin or a password to identify and authenticate an individual or groups of users over a network. Allows access control with username for up to 200 users

### Store Print Log

Allows audit of a print log file saved to CIFS server. Record ID, type, name, user, date, time, page count for every print job

### Firmware Updates

In addition to allowing automatic updates to the latest version the printer can be set to not receive older firmware versions to avoid downgrade by an unauthorised user

### SysLog

Allows IT Admin to access a single application (SIEM tool) to get device status updates for audit purposes over Syslog

---

## Address Book

### Speed Dials

300 locations for E-mail addresses

### Group Dial

A combination of up to 20 groups can be stored

### LDAP

The ability to connect to an external LDAP enabled address book, like Microsoft Exchange

---

## Developers

### Brother Solutions Interface (BSI)

Create powerful cloud and on premise solutions directly integrating the advanced print, scan and security capabilities of Brother devices.

## Supplies<sup>1</sup>, Upgrades and Accessories

### Inbox Toner

3,000 pages (BK)  
1,800 pages (CMY)

### Ultra High Yield Toner

TN667P  
10,000 pages (BK)  
10,000 pages (CMY)

### Drum Unit

DR665CLP approx 50,000 pages  
at 3 pages per job

### Belt Unit

BU635CL approx. 100,000  
pages at 3 pages per job

### Waste Toner Box

WT229CL approx 50,000 pages  
at 5 pages per job

### Fuser Unit

FD-5000 approx 100,000 pages  
at 5 pages per job

### Paper Feed Kit for MP Tray

PF-M5000 approx 50,000 pages  
at 5 pages per job

### Carton Contents

Machine, Inbox Toners, Drum,  
Belt, Waste Toner Box, Fuser,  
PF Kit, Power Supply Cord,  
Quick Set-Up Guide, Warranty  
Card, USB Cable included

### Optional Paper Trays<sup>2</sup>

250 sheet tray (LT-350CL)  
Maximum combinations of up to  
2 x LT-350CL

## Dimensions and weights (WxDxH)

### Printer w/o Carton

404 x 473 x 460mm - 26kg  
inc. TN/DR/WT/BU/FD/PF

### Optional Paper Trays

250 sheet tray:  
404 x 446 x 100mm - 3.25kg

## RMPV

### Recommended Monthly

Up to 5,000 pages monthly  
print volume

### Maximum Monthly<sup>6</sup>

Up to 60,000 pages monthly  
print volume  
Up to 5,000 pages monthly  
scan volume

## Environment

### Power Requirement

AC 220-240V, 50/60Hz

### Power Consumption<sup>14</sup>

Printing - 540W  
(330W in quiet mode)  
Copying - 540W  
(330W in quiet mode)  
Ready 60W  
Sleep 8.4W  
Networked Standby 7.8W  
Deep Sleep 0.53W  
Power Off 0.04W

### Sound Pressure<sup>15</sup>

Printing: 49dbA  
Quiet Print Mode: 44dbA  
Default Ready: 31dbA

### Sound Power<sup>15</sup>

Printing: 6.47BA  
Quiet Print Mode: 5.88BA  
Default Ready: 4.43BA  
Deep Sleep: 3.38BA

### Eco Mode

With seamless functionality  
the eco control system of the  
printer is designed to ensure  
lower noise levels, consume  
less energy when not in use and  
optimise toner usage which all  
help to reduce the total cost of  
ownership

### Operating Environment

Humidity 20 - 80%  
Temp 10° - 32.5° centigrade  
50° - 90.5° fahrenheit

### Storage Environment

Humidity 35 - 85%  
Temp 0° - 40° centigrade  
32° - 104° fahrenheit

## Computer Platforms

### Windows

Windows 11  
(Home|Pro|Education|Enterprise)  
Windows 10  
(Home|Pro|Education|Enterprise)  
(32 or 64 bit editions)  
Windows Server  
2025, 2022, 2019, 2016

### Linux

Supported Package  
management System:<sup>23</sup>  
dpkg, rpm

### Macintosh<sup>21</sup>

macOS 13 or greater

### ChromeOS™

Compatible with Chromebooks,  
including “Works with  
Chromebook” certified printing  
support and integrated Chrome  
OS scanning functionality

Visit: [support.brother.com](https://support.brother.com) for the full list of supported OS and to download the latest software

## Warranty

### Brother 3 Year Warranty

Your Brother printer comes with a FREE 3-year warranty — no registration required. To maintain optimal performance and warranty coverage, we recommend always using Brother Genuine Consumables.



1. Approx declared toner yield value in accordance with ISO/IEC 19798. 2. Calculated with 80gsm sheets of paper. 3. Windows & macOS. 4. Windows only. 5. Free download from the Brother Solutions Centre <http://solutions.brother.com> 6. Number of printed pages per month can be used to compare designed durability between Brother products. For maximum printer life, it is best to choose a printer with a duty cycle that exceeds your print requirements. 7. Requires Brother Software. 8. Based on ISO/IEC 24734. 9. Based on ISO/IEC 17629. 10. Based on ISO/IEC 24735. 11. Based on ISO/IEC 17991. 12. Requires an Internet connection. 13. Wi-Fi Direct supports WPA2-PSK (AES) only. 14. Measured according to IEC 62301 Edition 2.0. All values are approximate; power consumption varies depending on the usage environment or part wear. 15. Based on ISO 7779. 16. Requires additional activation. 17. May not be available in your region. 18. Third Party USB hubs not supported. 19. Requires installation of optional trays. 20. Set only a single sheet. 21. On macOS AirPrint only. 22. For WIA, 1200 x 1200 resolution. Brother Scanner Utility enables to enhance up to 19200 x 19200 dpi. 23. Red Hat Enterprise Linux 8.6 64bit, Red Hat Enterprise Linux 9.1 64bit, Fedora 39 64bit, Mageia 9 32bit, Mageia 9 64bit, openSUSE 15.5 64bit, SUSE Enterprise15-SP4 64bit, Debian 12.2.0 32bit, Debian 12.2.0 64bit, Ubuntu MATE 18.04 32bit, Ubuntu 22.04 64bit, Ubuntu 23.10 64bit, Linux Mint 21.2 64bit, Ubuntu 24.04 64bit. 24. Microsoft is transitioning towards driverless printing as the preferred standard. Legacy driver installations remain supported for customers with existing deployment requirements. 25. Advanced settings via legacy driver or the Print Support App only. 26. Compared to Brother's previous equivalent model. 27. Figure based on Brother's internal analysis at the time of publication. Figures may fluctuate depending on manufacturing methods and the availability of materials. 28. These results are based on Brother's internal calculations, compared to previous equivalent model. The CO<sub>2</sub> emissions scope covers C1 (Purchased goods and services), C11 (Use of sold products), and C12 (End-of-life treatment of sold products). Exact values may vary depending on country or region, manufacturing methods and the availability of materials.



**brother**  
at your side

**Brother International South Africa**  
96 Sovereign Drive, Route 21 Corporate Park, Irene  
Tel 0861 brother Email [info@brother.co.za](mailto:info@brother.co.za)  
[www.brother.co.za](http://www.brother.co.za) <https://support.brother.com/>



**BROTHER CREATIVE CENTRE**



Working with you for a sustainable future.



All specifications correct at time of publication and are subject to change without notice. Brother and its logo are trademarks of Brother Industries LTD., Japan. All registered trademarks referenced herein are the property of their respective companies.