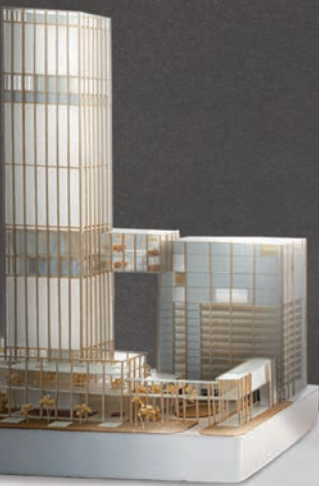


# Versatile. Compact. Functional.

Professional A3 inkjet wireless all-in-one printers



Full  
A3\*

\* MFC-J3940DW



Sharp Print Output



Large Paper Capacity



Highly Durable





INKJET MULTI-FUNCTION CENTRE SERIES

# A BIGGER CANVAS OF CREATIVITY

The Multi-Function Centre that delivers all your detail. Think big, be adventurous and productive. Ideas come and go, have the freedom to express them in bigger media sizes and in larger volumes at a fraction of the cost.



## PRINT BIGGER

Make your documents more memorable by printing them in A3. With full colour A3 print capabilities, your drawings, graphics and training or presentation materials will make a bigger impact. By printing A3 documents in house you have more control over your deadlines and can expand your opportunities.



## SCANNING TECHNOLOGY

As all-in-one devices these machines do so much more than just print. The scanning opportunities available for example can significantly enhance your productivity from home. You can scan in colour or mono at high speeds to several destinations to boost workflow.



### **HIGH VOLUME RE-IMAGINED**

Experience the versatile print formats with high volumes at an incredibly cost-efficient yield. With Brother's high-yield InkBenefit cartridges get yields of up to 3,000\*\* pages for black and 1,500\*\* pages for colour. Colour has never been more affordable.



### **VIVID PROFESSIONAL PRINTS**

Great ideas materialise with quality prints. The new fast-drying, pigment-based ink delivers superior print quality with high black density and true-to-life colours, ensuring each copy stays crisp, sharp and vivid.

\*\* Approximate cartridge yield is declared in accordance with ISO/IEC 24711

  
**inkbenefit**



## PEACE OF MIND. GUARANTEED.

When you purchase a Brother printer and our genuine inks or toners, we'll support you every step of the way with our FREE 5-year warranty commitment. YOU DO NOT NEED TO REGISTER YOUR PRODUCT, our warranty is automatic when you purchase your Brother printer. To keep your Brother machine running in optimal condition we recommend using only Brother Genuine Consumables, this will ensure you automatically enjoy our exclusive 5-year warranty.

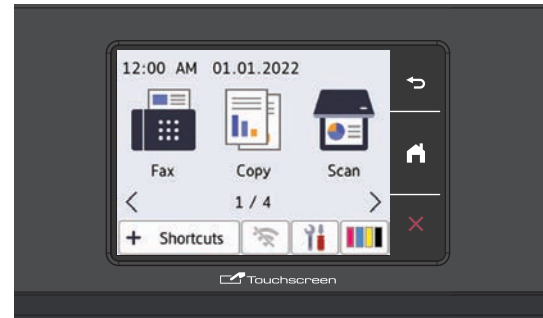


8.8cm LCD

## FUNCTIONALITY AT YOUR FINGERTIPS

Navigate print jobs and printer functions effortlessly with the 8.8cm colour LCD touchscreen†. With built-in Ethernet and wireless capabilities, connect all your devices to one MFC for extra convenience.

† Applicable to MFC-J3940DW InkBenefit



Full  
A3



## HIGH CAPACITY TRAYS

Less paper refills with a capacity of up to 600 sheets.† Meet high volume print demands without the need for constant paper refills. The standard paper tray holds up to 250 sheets, while the multi-purpose tray handles up to 100 sheets. Further increase your paper capacity with the lower paper tray that allows you to load an additional 250 sheets, giving you a total paper capacity of up to 600 sheets.†

† Applicable to MFC-J3940DW InkBenefit

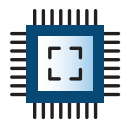
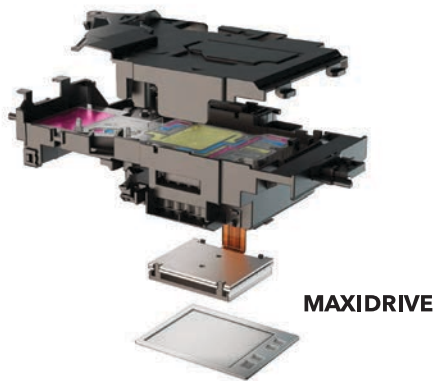


## FLEXIBLE AND EASY TO USE

They don't come much easier to use than these all-in-one printers, from set up and wireless connectivity, to daily use. Also, if you're working on large documents this all-in-one printer gives you the opportunity to focus on your work while it processes your documents. Whether it's printing double-sided automatically; or using the Automatic Document Feeder for multi-page scanning; or presenting your documents in A3; it's sure to improve your efficiency and productivity.

You need a printer you can rely on. These A3 professional all-in-one printers have been engineered into robust business printers, delivering fast, secure and professional quality to suit the growing needs of your business.

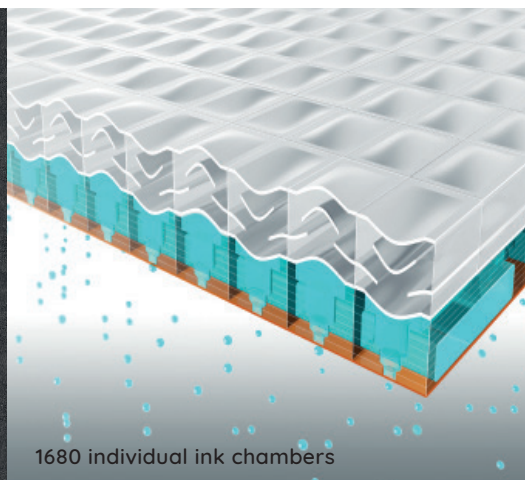
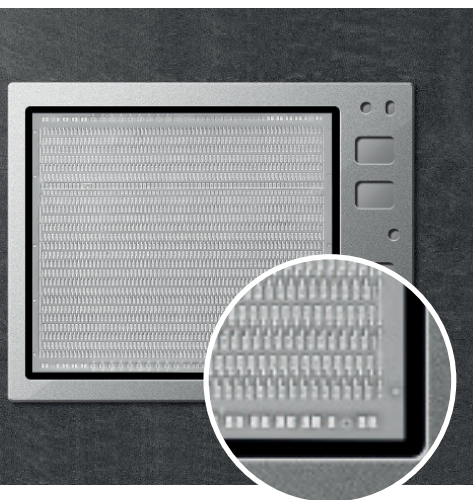




## POWERFUL NEXT GENERATION HIGH DENSITY PRINTING

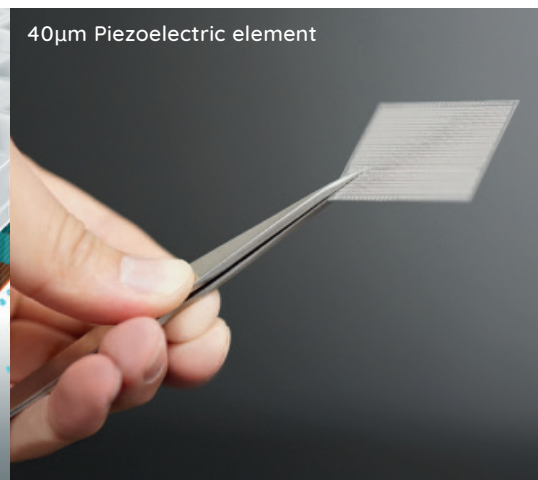
Brother's patented **MAXIDRIVE** print chip utilises a unique dual transformational piezoelectric system that emits ink at high power.

The **MAXIDRIVE** print chip delivers ultra-fast, durable, premium quality colour printing. Individual ink droplets are provided via 40 micrometer thick film, ejected through 1680 individual chambers across a single print chip.



40µm Piezoelectric element

1680 individual ink chambers



### Enhanced print quality

Each chip carries 1,680 pressure chambers where ink droplets are discharged.

### More durable

Up to 200% more prints in a lifetime. Piezoelectric element engineered to change shape upwards and downwards.Δ

### Increased print speed

High speed injection, up to 150% faster with advanced droplet control.Δ, ◇

Δ Compared to Brother conventional model  
◇ Only on selected models for colour printing



## BROTHER'S ORIGINAL SUPPLIES OFFER PEACE OF MIND AND QUALITY GUARANTEED.

You wouldn't put the wrong fuel in your car, would you? To get the most out of your Brother printer, don't compromise on ink; only Brother genuine ink gives you the perfect print performance every time.

Brother's genuine ink supplies will not only help keep your printer in the best possible condition for unrivalled print quality, they are more consistent than non-genuine supplies.

You also save money by avoiding the incurring costs for re-prints or dead-on-arrival cartridges, Brother ink helps you get it right the first time.



FOR OUR PRINTERS USE OUR CARTRIDGES

A PERFECT COMBINATION

# RANGE AT A GLANCE

## MFC-J3940DW INKBENEFIT



- Up to 28ipm print speed<sup>3</sup>
- Automatic 2-sided A3 print, copy, scan and fax
- 1-sided A3 scan, copy and fax
- 8.8cm colour touchscreen
- Wired, wireless and Wi-Fi Direct connectivity
- 2 x 250 sheet paper trays<sup>2</sup>
- 100 sheet multi-purpose tray<sup>2</sup>
- 50 sheet 2-Sided A3 automatic document feeder (ADF)<sup>2</sup>
- NFC (Near Field Communication) mobile print
- High-yield inks: BK 3,000 pages and C/M/Y 1,500 pages<sup>1</sup>

## MFC-J3540DW INKBENEFIT



- Up to 28ipm print speed<sup>3</sup>
- Automatic 2-sided A3 print
- 1-sided A3 scan, copy and fax
- 6.8cm colour touchscreen
- Wired, wireless and Wi-Fi Direct connectivity
- 1 x 250 sheet paper tray<sup>2</sup>
- 1 sheet manual feed slot
- 50 sheet A4 Automatic Document Feeder (ADF)<sup>2</sup>
- High-yield inks: BK 3,000 pages and C/M/Y 1,500 pages<sup>1</sup>

## MFC-J2340DW INKBENEFIT

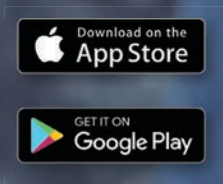


- Up to 28ipm print speed<sup>3</sup>
- Automatic 2-sided A4 print
- 1-sided A3 print
- 1-sided A4 scan, copy and fax
- 6.8cm colour touchscreen
- Wired, wireless and Wi-Fi Direct connectivity
- 1 x 250 sheet paper tray<sup>2</sup>
- 1 sheet manual feed slot
- 50 sheet A4 Automatic Document Feeder (ADF)<sup>2</sup>
- High-yield inks: BK 3,000 pages and C/M/Y 1,500 pages<sup>1</sup>



# Brother Mobile Connect App

FREE DOWNLOAD



## FLEXIBLE CONNECTIVITY



### WebConnect

Print from and scan to Box, Dropbox, Evernote, OneDrive, Google Drive™ OneNote without using your computer.



### Brother Cloud Apps

Access innovative cloud-based applications directly from the MFC: Print Creative Center, Scan to Mobile, Scan to Searchable PDF, Enlarge Text Copy, Fax forward to Cloud and E-mail, Scan to PowerPoint, Scan to Excel, Scan to Word, Easy scan to E-mail



### Brother Mobile Connect App

The way we live, work and print is always changing and to support the flexibility required, our free Brother Mobile Connect app provides intuitive, time-saving features to fit seamlessly into busy schedules.

Print and scan wirelessly from your smartphone or tablet; manage your supplies; and fully operate your Brother printer through Brother Mobile Connect and a local network. With a simple interface, matching the display screen of our printers, navigating tasks is quick and easy. You can even customise the app so your favourite features are easiest to access.



Effortless print / scan experience



Send a print job, any time, any place



No more lost scanned files



Customisable interface



Replenish ink cartridges, quickly and easily



**MFC-J2340DW**  
InkBenefit



**MFC-J3540DW**  
InkBenefit



**MFC-J3940DW**  
InkBenefit

Functions	Print, Scan, Copy, Fax, Direct Photo Print, Auto 2-Sided Print, Wireless Network, Wi-Fi Direct, Mobile Print, WebConnect, Brother Apps	
<b>GENERAL</b>		
Memory	256MB	
Display	6.8cm LCD Touchscreen	8.8cm LCD Touchscreen
Interface	Hi-Speed USB 2.0	
Connectivity	Wired / Wireless Network / Wi-Fi Direct	
<b>COLOUR PRINT FUNCTION</b>		
Print Speed (Laser Comparable) <sup>i</sup>	Up to 28 ipm (mono) and 28 ipm (colour)	
Print Speed (Fast Mode)	Up to 35 ppm (mono) and 32 ppm (colour)	
First Print Out Time <sup>ii</sup> (FPOT)	4.4 sec (mono) and 4.6 sec (colour)	
Duplex Print Speed <sup>i</sup>	Up to 21 ipm (mono) and 21 ipm (colour)	
Print Resolution	Up to 1200x4800 dpi	
Automatic 2-sided Print	Yes (Up to A4/LTR)	Yes (Up to A3/LGR)
Borderless Printing	Yes	
Colour Enhancement (Customise colour output via Brother image enhancement)	Yes	
Mobile Print	Brother Mobile Connect, Airprint, Mopria, Print Service Plugin	
WebConnect	Yes	
Wi-Fi Direct	Yes	
Near Field Communication (NFC)	No	Yes
<b>COLOUR COPY FUNCTION</b>		
Maximum Copy Size	Up to A4 / LTR	Up to A3 / LGR
Copy Speed (Laser Comparable) <sup>iii</sup>	Up to 25 ipm (mono) and 16 ipm (colour)	
Copy Resolution (Colour)	Print: Max. Up to 1200x4800 dpi, Scan: Max. Up to 600x600 dpi	
Auto Duplex Copy	-	Yes (LGR, LGL, Folio, LTR, A3, A4, A5)
Enlargement / Reduction Ratio	25% - 400% in 1% increments	
Background Colour Removal	Yes	
<b>COLOUR SCAN FUNCTION</b>		
Maximum Scan Size	Up to A4	Up to A3
Duplex Scan	-	Yes (Up to A3 / LGR)
Scan Resolution	Optical: Up to 1,200 x 2,400 dpi (FB) Interpolated: Up to 19,200 x 19,200 dpi (For Windows 7/Windows 8/Window 8.1/10)	
Scanning Speed <sup>iv</sup>	Up to 25 ipm (mono) and 25 ipm (colour)	
"Scan To" Feature	Email, Email server, File, FTP, Image, Media, Network (Window only), OCR	
<b>COLOUR FAX FUNCTION</b>		
Maximum Fax size	Up to A4	Up to A3
Modem	14.4 kbps	33.6 kbps
Memory Transmission <sup>v</sup>	Up to 150 pages	
Speed Dials	100x2 numbers <sup>vi</sup>	
Group Dials	Up to 6 groups	
Out of Paper Reception <sup>v</sup>	Up to 150 pages	
Fax Forwarding	Yes (B&W only)	
Internet Fax (Version T37)	Yes	
PC-Fax (Mono)	Sending & Receiving <sup>vii</sup> (USB/Network)	
<b>ADDITIONAL FEATURES</b>		
Brother Apps	Yes	
Secure Function Lock	Yes [Version 3.0] Number of Registerable Users: 100	
<b>DIRECT PHOTO PRINTING</b>		
USB Flash Memory	Yes (JPEG)	
<b>PAPER HANDLING</b>		
Paper Input (Standard Tray)	Up to 250 sheets (80g/m <sup>2</sup> )	
Paper Input (Lower Tray)	-	Up to 250 sheets (80g/m <sup>2</sup> )
Paper Input (Multipurpose Tray / Manual Feed Slot)	1 sheet (64-260g/m <sup>2</sup> )	100 sheets (64-260g/m <sup>2</sup> )
Paper Output	Up to 100-sheets (up to A4, 80g/m <sup>2</sup> ), Up to 50-sheets (up to A3, 80g/m <sup>2</sup> )	
Automatic Document Feeder	Up to 50 pages (80g/m <sup>2</sup> )	
Paper Handling Sizes (Standard Tray)	<Landscape> A4, LTR, EXE <Portrait> A3, LGR, LGL, Folio, A5, A6 Photo (10x15cm), Index card (13x20cm) Photo-L (9x13cm), Photo-2L (13x18cm), C5, Com-10 DL Envelope, Monarch	





**MFC-J2340DW**  
InkBenefit



**MFC-J3540DW**  
InkBenefit



**MFC-J3940DW**  
InkBenefit

Paper Handling Sizes (Lower Tray)	-	<Landscape> A4, LTR <Portrait> A3, LGR, LGL, Folio	
Paper Handling Sizes (Manual Feed Slot)	<Landscape> A4, LTR, EXE <Portrait> A3, LGR, LGL, Folio, A5, A6 Photo (10x15cm), Index card (13x20cm) Photo-L (9x13cm), Photo-2L (13x18cm), C5 Com-10, DL Envelope, Monarch	-	
Paper Handling Sizes (Multi-Purpose Tray)	-	<Landscape> A4, LTR, EXE <Portrait> A3, LGR, LGL, Folio, A5, A6 Photo (10x15cm), Index card (13x20cm) Photo-L (9x13cm), Photo-2L (13x18cm) Com-10, DL Envelope, Monarch, C5	
Media Type (Standard Tray)	Plain, Inkjet, Glossy (cast/resin), Recycled *Glossy is available up to A4/LTR	Plain, Inkjet, Glossy(cast/resin), Recycled	
Media Type (Lower Tray)	-	Plain, Recycled	
Media Type (Manual Feed Slot)	Plain, Inkjet, Glossy, Recycled	-	
Media Type (Multi-Purpose Tray)	-	Plain, Inkjet, Glossy, Recycled	
<b>SUPPORTED OS &amp; SOFTWARE</b>			
Supported Operating Systems	Windows: 7 / 8 / 8.1 / 10 / 11 / Server 2008 / Server 2008 R2 / Server 2012 / Server 2012 R2 / 2016 / 2019 Mac: OS 10.14.6/10.15.x/11/12 <sup>x</sup>		
Network Management Tools	Web Based management, BRAdmin Light <sup>viii</sup>		
<b>SUPPLIES</b>			
Innobella™ Ink Cartridges	Inbox Cartridge Black: Approximate Yield 350 A4 pages <sup>ix</sup> Inbox Cartridge C/M/Y: Approximate Yield 350 A4 pages <sup>ix</sup> High Yield LC472XL BK: Approximate Yield 3,000 A4 pages <sup>ix</sup> High Yield LC472XL C/M/Y: Approximate Yield 1,500 A4 pages <sup>ix</sup>		
<b>DIMENSIONS &amp; WEIGHT</b>			
Without Carton (W x D x H)	530mm x 398mm x 305mm 17.0 kg	576mm x 477mm x 305mm 19.8 kg	576mm x 477mm x 375mm 23.4 kg
<b>WARRANTY</b>			
Automatic Product Warranty	5-Year On-site Warranty		

i Based on ISO/IEC 24734. For more information, please refer to [www.brother.com/rd/printspeed](http://www.brother.com/rd/printspeed)

ii Based on ISO/IEC 17629. For more information, please refer to [www.brother.com/rd/printspeed](http://www.brother.com/rd/printspeed)

iii Based on ISO/IEC 24735 for models with Automatic Document Feeder only. For more information, please refer to [www.brother.com/rd/printspeed](http://www.brother.com/rd/printspeed).

iv Based on ISO/IEC 17991

v Based on ITU-T Test Chart No 1/MMR

vi Stores up to 100 address entries. Each entry may have 2 numbers

vii Receiving is for Windows® only

viii Not supported on Mac and Linux. Available for download at <http://support.brother.com>

ix Approximate cartridge yield is declared in accordance with ISO/IEC 24711

x For printing and scanning from Mac, use AirPrint or download iPrint&Scan from Mac App Store. Brother iPrint&Scan application on macOS supports PDF/JPG/BMP and PNG format only. Mac OS driver is not provided.



**Brother International South Africa**  
96 Sovereign Drive, Route 21 Corporate Park, Irene  
Tel 0860 brother Email [info@brother.co.za](mailto:info@brother.co.za)  
[www.brother.co.za](http://www.brother.co.za) <https://solutions.brother.com>



All specifications correct at time of publication and are subject to change without notice. Brother and its logo are trademarks of Brother Industries LTD., Japan. All registered trademarks referenced herein are the property of their respective companies.



Brother strongly recommends the use of genuine Brother consumable products only. Benefits include better quality print, greater yields per consumable, protection of your machine from damages and achievement of optimum performance. As a precaution, please note that your machine warranty may not cover any damages arising from the use of non-genuine consumables.