

QL-1100

brother
at your side



Wide Format, Professional Label Printer

- Prints on labels up to 101.6mm wide, capable of printing shipping labels for packages.
- USB connectivity.
- PC, Mac® or Android™** compatibility
- High speed printing of up to 69 labels per minute*.
- Use continuous rolls and cutter to print labels up to 900mm in length.
- Automatic Crop function lets on-line sellers easily print product and other barcode labels from A4 size label sheet templates (Windows only)

* Based on using standard address labels, black text only, at 300 X 300 dpi.

** Brother QL-1100 requires separate purchase of USBtoGO cable
Android 4.0.3 or higher.



www.brother.co.za



The Brother QL-1100 professional label printer offers unrivalled versatility not only in the office, but also warehouse, postal, facilities management and other industries.

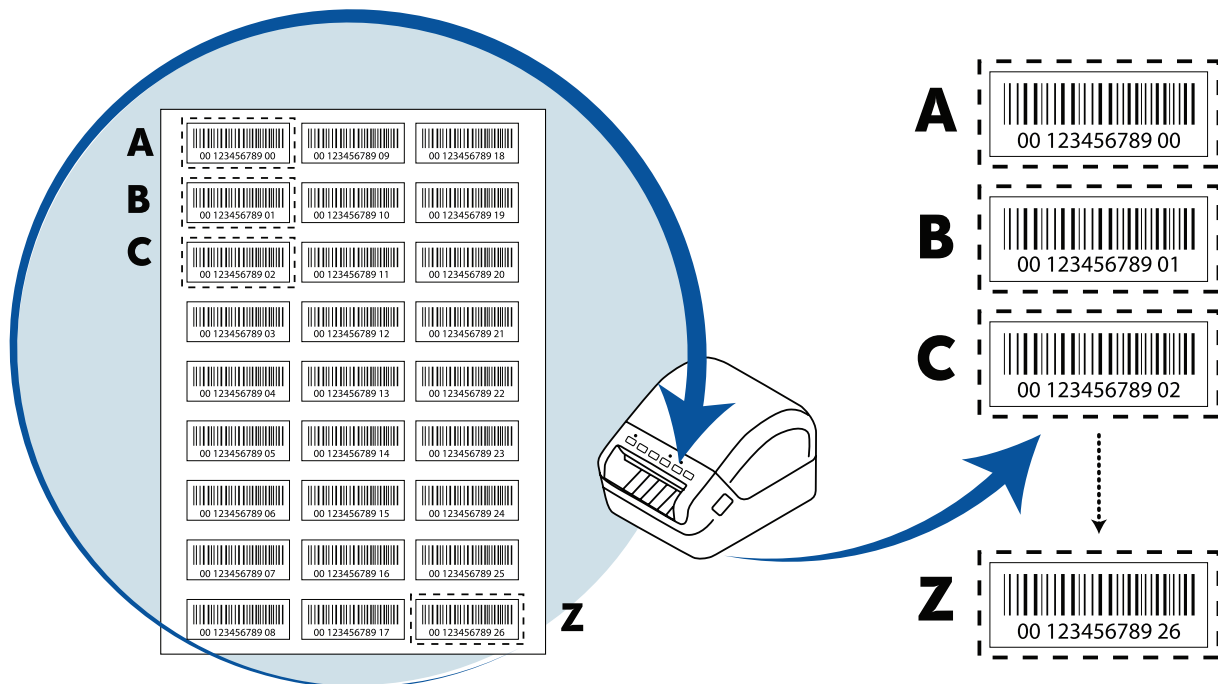
Create labels with black print up to 900mm in length, from PC, Mac® or Android™** devices. The QL-1100 allows easy connection to desktop computers using USB.

For developers and systems integrators looking to incorporate label printing as part of their solutions, software development kits for Windows and Android™** offer an easy way to add support for the Brother QL-1100 label printer.



Auto Crop *Windows only*

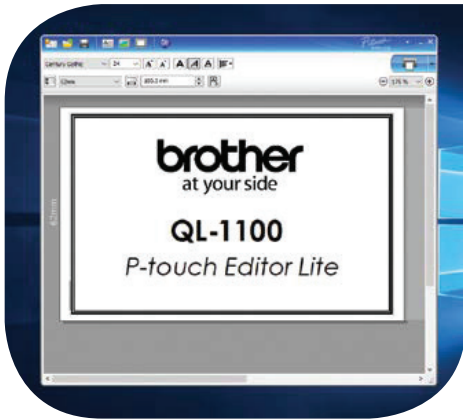
The Auto Crop feature on the Brother QL-1100 automatically identifies and crops individual labels (including barcodes) from a A4 sized sheet and prints each label one by one. You can print the entire sheet of labels to the QL-1100 individually or select a section of labels using the snapshot feature and only the selected labels will print individually. This is a great feature for product labels or other labels that sheet formats are already generated. Now you can easily print only the labels you need quickly.



** Brother QL-1100 requires separate purchase of USBtoGO cable Android 4.0.3 or higher.

Software solutions

With label design apps for desktop PC's and mobile devices, and SDK's to integrate the QL range into your own applications, you can choose the best option for your label printing needs.

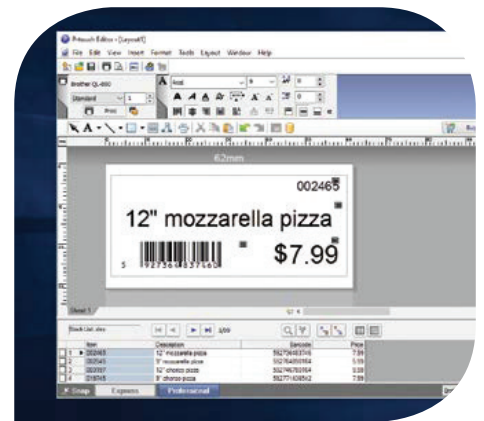


P-touch Editor Lite

Built inside the Brother QL-1100, this easy to use label design software works without the need to install software or drivers. Working like a USB flash drive, simply connect to your PC using USB, and launch the software from the drive that appears. Include images, frames and any of your fonts on your label design and print.

P-touch Editor with Microsoft Office add-in

Design professional labels including images and logos, barcodes and frames. Link to data contained in Excel or .csv files, to print many labels quickly and efficiently. The Microsoft Office add-in lets you highlight, click and print right from within Word, Excel, or Outlook.

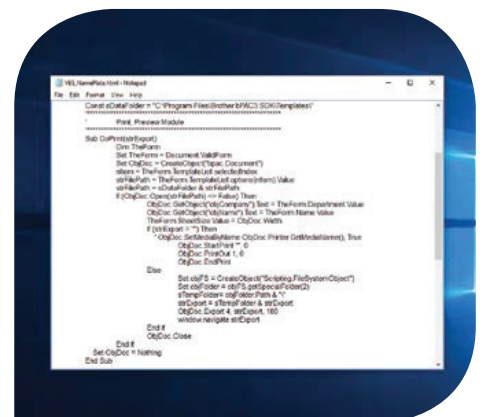


Brother iPrint&Label app** Android smartphones/tablets

Print labels on the Brother QL-1100 using the free iPrint&Label app. Connect via USB and choose one of the pre-defined templates or quickly design your label from scratch. This free app is available from your mobile device's app store by searching "Brother iPrint&Label".

Software Development Kits for Windows and Android

System integrators and software developers can now take advantage of various Brother SDK's that allow easy integration of label printing directly within their own apps and software. For more information please visit <http://www.brother.co.jp/eng/dev/index.aspx>



** Brother QL-1100 requires separate purchase of USBtoGO cable
Android 4.0.3 or higher.

Logistics and warehousing

In busy warehouses and mail rooms, accurate and timely labelling of packages, envelopes and product cartons is essential to ensure the smooth running of all logistics operations.

The Brother QL-1100 is capable of printing full size shipping postage labels.



Handling labels



Postage labels



Shipping labels



Product packaging

DK rolls for the QL-1100 label printer range



Wide range of labels available in paper and plastic film material, pre-sized labels or continuous rolls

DK Die-Cut Labels	Material	Colour	Size	Item No.
Standard address label (400/roll)	Paper	White	29 x 90 mm	DK-11201
Large address label (400/roll)	Paper	White	38 x 90 mm	DK-11208
Small address label (800 roll)	Paper	White	29 x 62 mm	DK-11209
Shipping label (300/roll)	Paper	White	62 x 100 mm	DK-11202
File folder label (300/roll)	Paper	White	17 x 87 mm	DK-11203
Multi-purpose label (400/roll)	Paper	White	17 x 54 mm	DK-11204
Square label (1000/roll)	Paper	White	23 x 23 mm	DK-11221
CD/DVD label (100/roll)	Film	White	58 mm	DK-11207
Round label (1200/roll)	Paper	White	12 mm	DK-11219
Round label (1000/roll)	Paper	White	24 mm	DK-11218
Large multi-purpose (600/roll)	Paper	White	102 x 51 mm	DK-11240
Large shipping label (200/roll)	Paper	White	102 x 52 mm	DK-11241
Large shipping label (180/roll)	Paper	White	103 x 164 mm	DK-11247

DK Continuous-Length Tapes - 30.48m	Material	Colour	Size	Item No.
Continuous-length	Paper	White	12 mm	DK-22214
Continuous-length	Paper	White	29 mm	DK-22210
Continuous-length	Paper, non-adhesive	White	54 mm	DK-N55224
Continuous-length	Paper	White	62 mm	DK-22205
Continuous-length	Paper, removable	White	62 mm	DK-44205
Continuous-length	Paper, removable	Yellow	62 mm	DK-44605
Continuous-length	Paper	White	102 mm	DK-22243
Continuous-length	Paper	White	103 mm	DK-22246

DK Continuous-Length Tapes - 15.24m	Material	Colour	Size	Item No.
Continuous-length	Film	White	29 mm	DK-22211
Continuous-length	Film	White	62 mm	DK-22212
Continuous-length	Film	Yellow	62 mm	DK-22606
Continuous-length	Film	Clear	62 mm	DK-22113

Specifications

Printing / Media	
Printing technology	Direct Thermal
Maximum Resolution	300 x 300dpi
Maximum Print Speed*	Up to 69 labels per minute / max 110mm per second
Tape Sizes	DK Rolls (DK Die-cut and DK Continuous)
Maximum Tape Width	103mm
Maximum Print Width	101.6mm†
Maximum Label Length	900mm
Cutter	Auto
Cutter Life	Up to 300,000 (die-cut labels) 150,000 (continuous labels)
Connectivity	
USB	USB version 2.0 full-speed
Mobile Device Compatibility	
Software/App^	Brother iPrint&Label, free app download for USBtoGo printing from your Android™** mobile device
Memory	
Flash (for label templates)	7.8MB
Locations (for label templates)	99 templates
Power	
Power	220 - 240V / 50HZ 1.5A
ENERGY STAR® certified	Yes
Weights / Dimensions	
Machine Dimension (wxdxh)	170mm x 222mm x 151mm
Machine Weight	1.7kg
Package Dimensions (wxdxh)	240mm x 295mm x 245mm

* Based on using standard address labels, text only, at 300 x 300 dpi.

** Brother QL-1100 requires separate purchase of USBtoGO cable
Android 4.0.3 or higher.

† There is a chance that you can't print in full width depending on your environment. For the details, see our website, support.brother.com. Note: We recommend designing with enough margin, because there is a possibility of cut off if the paper is not fed in straight.

Specifications

Software / Firmware	
Operating System	PC: Windows 10, Windows 8/8.1, Windows 7, Windows Server 2008, 2008 R2, 2012, 2012 R2, 2016 Mac: OS X® v10.11.x - v10.13.x
SDK availability (visit http://www.brother.co.jp/eng/dev/index.aspx)	b-PAC (for Windows) Brother Print SDK for Android™ (only USB)
Supported printer commands	Raster ESC/P P-touch Template
Barcode symbologies (using P-touch Editor)	CODE39, CODE128, UCC/EAN128(GS1-128), ITF(I-2/5), CODABAR(NW-7), UPC-A, UPC-E, EAN13, EAN8, ISBN-2(EAN13 AddOn2), ISBN-5(EAN13 AddOn5), Laser Barcode, POSTNET, RSS(RSS14 Standard, RSS14 Truncated, RSS14 Stacked, RSS14 Stacked Omni, RSS Limited, RSS Expanded, RSS Expanded Stacked), PDF417(Standard, Truncate, Micro), QR code(Model1, Model2, Micro), Data Matrix(ECC Square, ECC Rectangular), MaxiCode(Model2, Model3, Model4, Model5) RSS symbols / CODE93 / POSTNET / UPC/EAN EXTENSION / MSI / QR Code (model 1, model 2, micro QR)PDF417 (Standard, Truncate, MicroPDF417) / Data Matrix(ECC200 Square, ECC200 Rectangular) / MaxiCode / Aztec (Windows only), IMB
Barcode symbologies (Built-in printer firmware)	CODE39, CODE128, UCC/EAN-128(GS1-128), ITF(I-2/5), CODABAR(NW-7), UPC-A, UPC-E, EAN13(JAN13), EAN8, GS1 DataBar(RSS)(GS1 DataBar Omnidirectional,GS1 DataBar Truncated,GS1 DataBar Stacked,GS1 DataBar Stacked Omnidirectional,GS1 DataBar Limited,GS1 DataBar Expanded,GS1 DataBar Expanded Stacked), PDF417(Standard, Truncate, Micro), QR Code(Model 1, Model 2, Micro), Data Matrix (ECC200 Square, ECC200 Rectangular), MaxiCode, CODE93, POSTNET, UPC-E EXTENTION, MSI, Aztec
Internal fonts	Bitmap fonts: Letter Gothic Bold, Helsinki, Brussels, San Diego, Brougham Font sizes: 24, 32, 48 dots Outline fonts: Letter Gothic Bold, Helsinki, Brussels Font sizes: 33-400 dots (22 sizes)
Database Connection support (eg. Excel/jpeg)	Windows: csv, txt, mdb, xls, Microsoft SQL, server database Mac: csv, txt
Date/Time Stamp	PC generated
Included items	
In the box	P-touch Editor Software & Driver (Web Download), AC Power Cord, USB Cable, Starter Rolls: DK-11247 Diecut Large Shipping Labels (41 labels), DK-22205 Continuous Length Paper Tape – 62mm x 416mm



All specifications correct at time of printing. Brother is a registered trademark of Brother Industries Ltd. Brand product names are registered trademarks or trademarks of their respective companies.



Brother International South Africa
96 Sovereign Drive, Route 21 Corporate Park, Irene
Tel: 0861 BROTHER Fax: +27 (0) 12 - 345 3886
www.brother.co.za <http://solutions.brother.com>



Working with you for a better environment
www.brotherearth.com